

New Relief High School Boundary Scenarios

Ardrey Kell, Myers Park, and South Mecklenburg

November 14, 2022

Planning Services Department

Welcome

Objectives:

- Provide an overview of the work done so far
- Ongoing work and next steps
- Your input



Student Assignment Policy S-ASGP



Board Requirement for Student Assignment

- contiguous boundaries

Board's Decision Matrix for School Boundary Decisions

- home to school distance
- intact feeder patterns
- socioeconomic diversity
- utilization

Board's Additional Factors for Consideration

- the feasibility of achieving the board's goals through other means, such as establishing partial magnet schools;
- keeping entire neighborhoods assigned to the same school;
- projections for population growth and demographic shifts;
- site limitations or legal restrictions that affect expansion capabilities;
- whether the school has been identified for capital improvements through bond or other funding.

Process for Engagement and Decision

New Relief High School Boundary

Superintendent, through his designees, gathers community input and feedback:

At least 3 engagement sessions:

- session 1 introduces the opportunity, seeks input from community on new boundary
- session 2 shares at least two draft boundary scenarios and seeks community feedback
- session 3 previews the superintendent's recommendation to the Board

Community input and feedback shared with the superintendent and Board:

- at least one public update to the Board during a regularly scheduled Board meeting
- at least one public hearing during a regularly scheduled Board meeting

Multiple inputs to the Superintendent's recommendation and Board's vote

- Policy S-ASGP
- community input
- achieving 2017 bond intent (i.e., high school relief)

Superintendent makes recommendation to the Board

Public hearing and Board decision

Change becomes effective

Engagement Spring 2022

Planning & Engagement

- Meeting with Internal Team consisting of Learning Community Superintendents, Principals, and District Administration- ongoing
- Scheduling and facilitating parent work groups and conversations- ongoing
- Upcoming community sessions
- Upcoming interactive maps and surveys for feedback

Scenario Modeling Approach

March 1, 2022

- Community Session 1
- 6 CMS staff | 3 BOE members | 161 general public

March 25, 2022

- Crowd source mapping tool
2,976 views | 103 responses

April 1, 2022

- Initial parent interest meeting

April 7, 2022

- Community Session 2
10+ CMS staff | 180+ general public

Engagement

- Feedback from Board
- Feedback from Community via email and documented
- Feedback at Parent workgroup sessions (**April 19 & May 24**)
 - 4 subgroups
- **April 26, 2022:** Board Update

AK/MP/SM Relief High School

Continued Engagement & Next Steps Fall 2022

Community Outreach and Facilitation of Community Conversations	<ul style="list-style-type: none">• Ongoing -discussions with Internal Planning Team (Learning Community Superintendents, Principals, District Staff)• Aug 2022- Monthly Parent Workgroup Meetings begin• Aug- Dec 2022- Parent Workgroup researches urban planning, best practices, and supports small group sessions• Oct- Dec 2022- Small Group Sessions with Parents, Students, and Staff• In Process- Development of survey questions for work group, parents, schools, staff• In Process- Development of Q&A to address questions and concerns• Nov- Dec 2022- On-the-ground neighborhood evaluation• Early January 2023- In-person Public Engagement Session
Finalize Recommendation	Late January 2023
Public Hearing Board Vote	February 2023

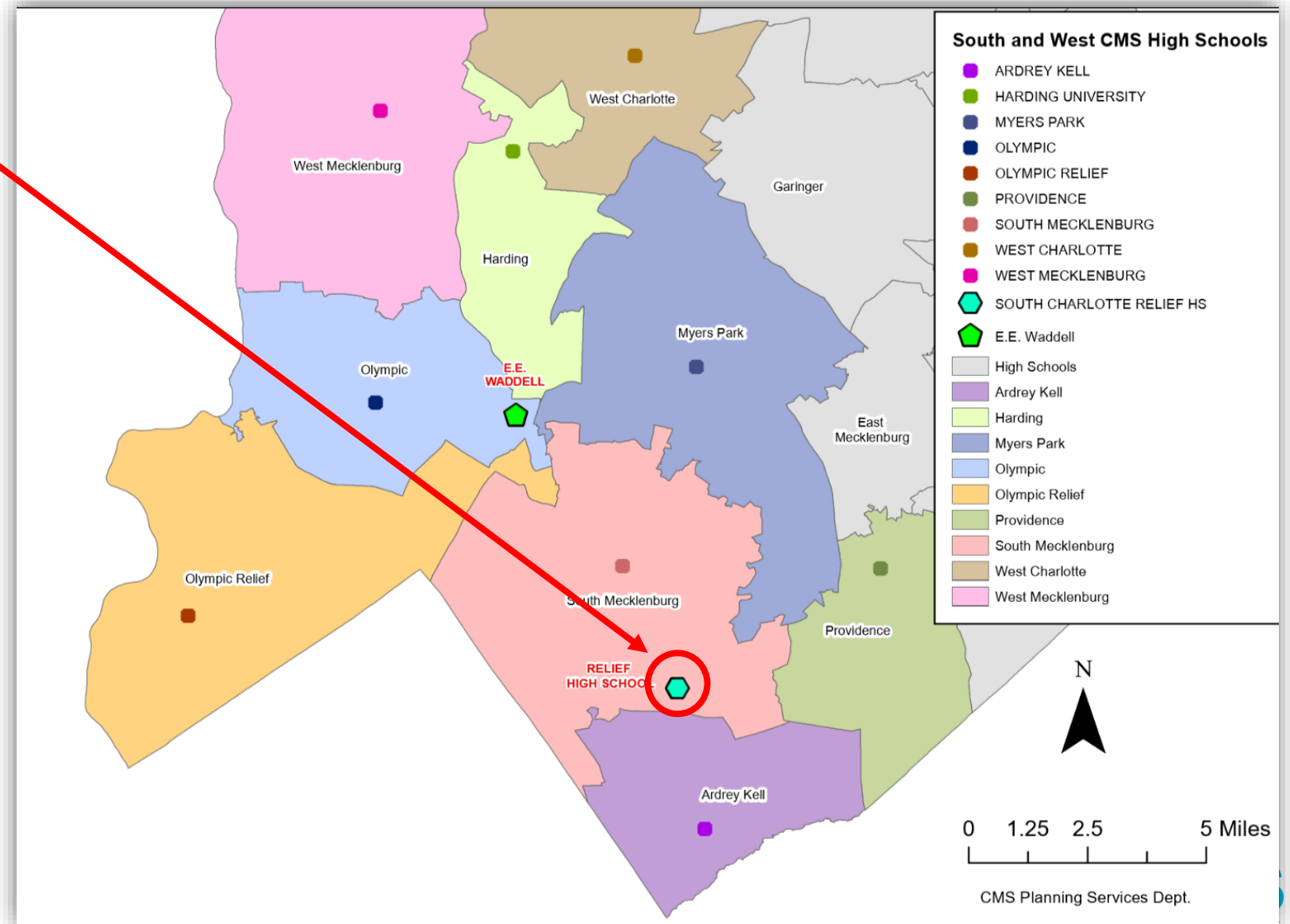
AK/MP/SM Relief High School

Scenario Development and Analysis

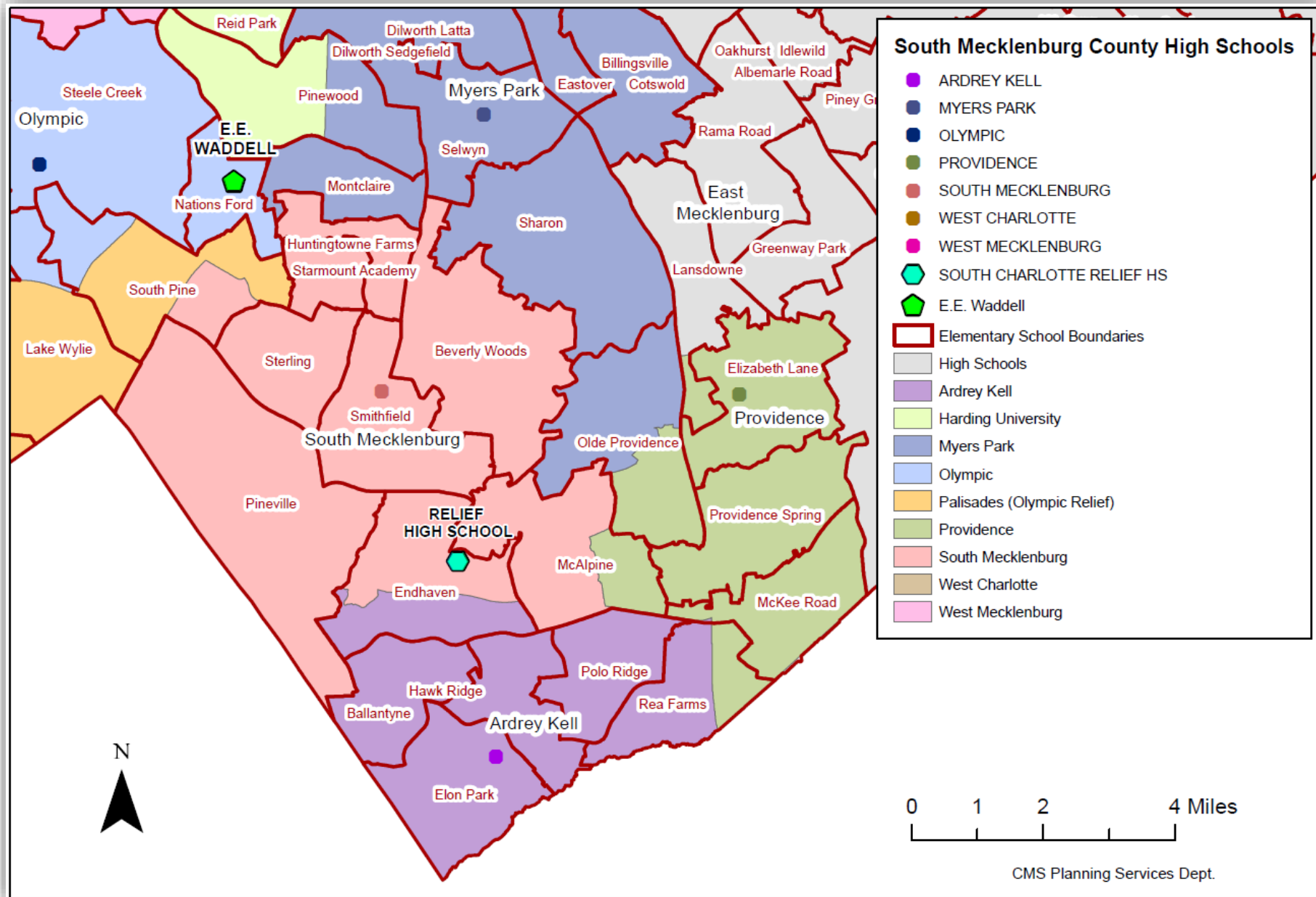
Scenario Development	<ul style="list-style-type: none">• Spring 2022- Scenarios developed for community feedback (<i>Purple, Pink</i>)• August 2022- Creation of two additional scenarios built upon the previous scenarios (<i>Blue, Green</i>)• Sept 2022- After review and feedback from parent workgroup, Planning created 3 additional scenarios for review by internal team and parent workgroup (<i>Orange, Yellow, Violet</i>)• Sept 2022- Green scenario was combined with the blue scenario• Oct 2022- 4 scenario options presented to Internal Planning Team (<i>Blue, Orange, Yellow, Violet</i>)• Oct 2022- 4 scenario options presented to Parent Workgroup (<i>Blue, Orange, Yellow, Violet</i>)• Oct-Nov 2022 – 5 new scenario drafts based on feedback so far (Red A, Red B, Brown A, Brown B, Brown C)• Oct 2022-Jan 2023- Continue with scenario iterations and modification in accordance with board priorities, board policy, and community feedback
Analysis	<ul style="list-style-type: none">• Sept 2022- New student enrollment data processed for 2022-2023 school year at 20th day• Sept 2022- Began scenario development and analysis grounded in Board priorities• Sept-Oct- Calculated estimates for number of students impacted, utilization, feeder patterns, socioeconomics, and proximity for option scenarios• Oct 2022- Measured, analyzed, and presented outcomes for each scenario option• Oct-Dec 2022- Analyze community feedback
Additional Considerations	<ul style="list-style-type: none">• Urban planning & development (permits, proposals, land use changes, transportation)• Program or pathway offerings at current high schools (magnet programs, CTE, etc)• Learning from others who have recently opened high schools

South Charlotte Relief High School

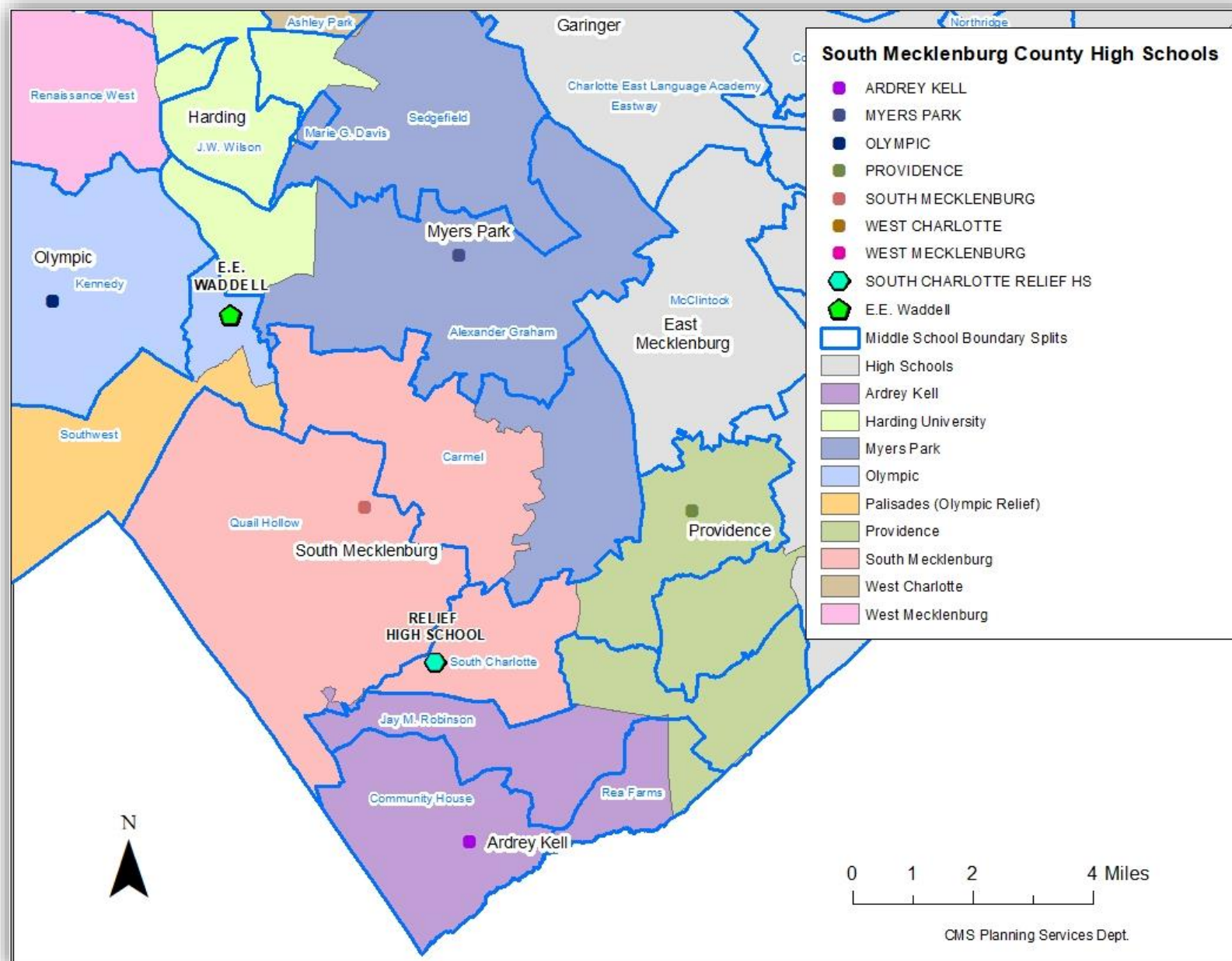
- New 100 classroom high school located at 12218 North Community House Road.
- Relieves overcrowding at Ardrey Kell, South Mecklenburg and Myers Park high schools



High School by Elementary Attendance Area



High School by Middle School Attendance Area



Current School Data for AK/MP/SM: Enrollment

School	Number of Classrooms	Number of Mobile Units	2021-22 Enrollment	2022-23 Enrollment	Estimated Student Capacity*	Current utilization rate
Ardrey Kell	96	22	3,494	3,543	2,500	142%
Myers Park	140	19	3,539	3,615	3,000	121%
South Mecklenburg	125	9	3,259	3,366	2,700	125%

- This estimate is based on various factors such as the number of available/anticipated classrooms, staff allotments, resources, school management, and district standards. This is adjusted from the original estimates shared to more closely reflect the environments at the schools.
- The Board's goal is to move towards 100-classroom, 2500 student high schools.

Current School Data for AK/MP/SM:

Current Feeder Patterns

Summary of Feeder Patterns for High Schools in Impact Area			
Total Feeder Patterns	Count	Description	Improvement Indicator
ES to MS to HS	37	Total Number of Feeder Patterns	Decrease
MS to HS	17	Total Number of MS to HS Feeder Patterns	Decrease
Intact Feeder Patterns			
ES to MS to HS intact	19	Count of Intact Feeder Patterns	Increase
MS to HS intact	3	Count of Intact Feeder Patterns from MS to HS	Increase

Feeder Patterns

	2023-2024 ES	2023-2024 MS	2023-2024 HS	Number of students
1	Ballantyne	Community House	Ardrey Kell	509
2	Beverly Woods	Carmel	South Mecklenburg	402
3	Billingsville Cotswold	Alexander Graham	Myers Park	651
4	Dilworth (Sedgefield-Latta)	Sedgefield	Myers Park	523
5	Eastover	Sedgefield	Myers Park	274
6	Elizabeth Lane	South Charlotte	Providence	621
7	Elon Park	Community House	Ardrey Kell	608
8	Endhaven	Jay M Robinson	Ardrey Kell	238
9		Quail Hollow	South Mecklenburg	150
10		South Charlotte	South Mecklenburg	78
11	First Ward Creative Arts	Sedgefield	Myers Park	156
12	Hawk Ridge	Community House	Ardrey Kell	242
13		Jay M Robinson	Ardrey Kell	226
14	Huntingtowne Farms	Carmel	South Mecklenburg	359
15	Marie G Davis	Marie G Davis	Myers Park	100
16	McAlpine	Jay M Robinson	Providence	167
17		South Charlotte	South Mecklenburg	236
18	McKee Rd	Jay M Robinson	Providence	527
19	Montclair	Alexander Graham	Myers Park	364
20	New ES South	Community House	Ardrey Kell	810
21	Olde Providence	Carmel	Myers Park	368
22		South Charlotte	Providence	160

23	Pineville	Quail Hollow	South Mecklenburg	658
24	Pinewood	Alexander Graham	Harding	228
25			Myers Park	221
26	Polo Ridge	Jay M Robinson	Ardrey Kell	636
27	Rea Farms K8	Rea Farms K8	Ardrey Kell	307
28			Providence	38
29	Selwyn	Alexander Graham	Myers Park	468
30	Sharon	Alexander Graham	Myers Park	320
31		Carmel	Myers Park	243
32	Smithfield	Quail Hollow	South Mecklenburg	487
33	South Pine	Kennedy	Olympic	108
34		Quail Hollow	South Mecklenburg	72
35		Southwest	Palisades	359
36	Starmount Academy	Carmel	South Mecklenburg	332
37	Sterling	Quail Hollow	South Mecklenburg	478

Current School Data for AK/MP/SM:

SES and Proximity

Socioeconomic Status (SES)*			
Schools	High SES	Mid SES	Low SES
Ardrey Kell	78%	21%	1%
Myers Park	56%	25%	19%
South Mecklenburg (incl. language magnet students)	28%	25%	46%

*SES is an index measure based on family income, adult educational attainment, homeownership, household composition, and English language ability (2020 Census data).

Proximity Analysis	Travel Time (in minutes by car)			Travel Distance (in miles)		
	Min	Max	Mean	Min	Max	Mean
Ardrey Kell	1.3	12.6	6.1	0.3	5.3	2.5
Myers Park	2.9	16.4	9.9	0.6	8.4	3.7
South Mecklenburg	1.9	15.7	8.1	0.5	8.3	3.4

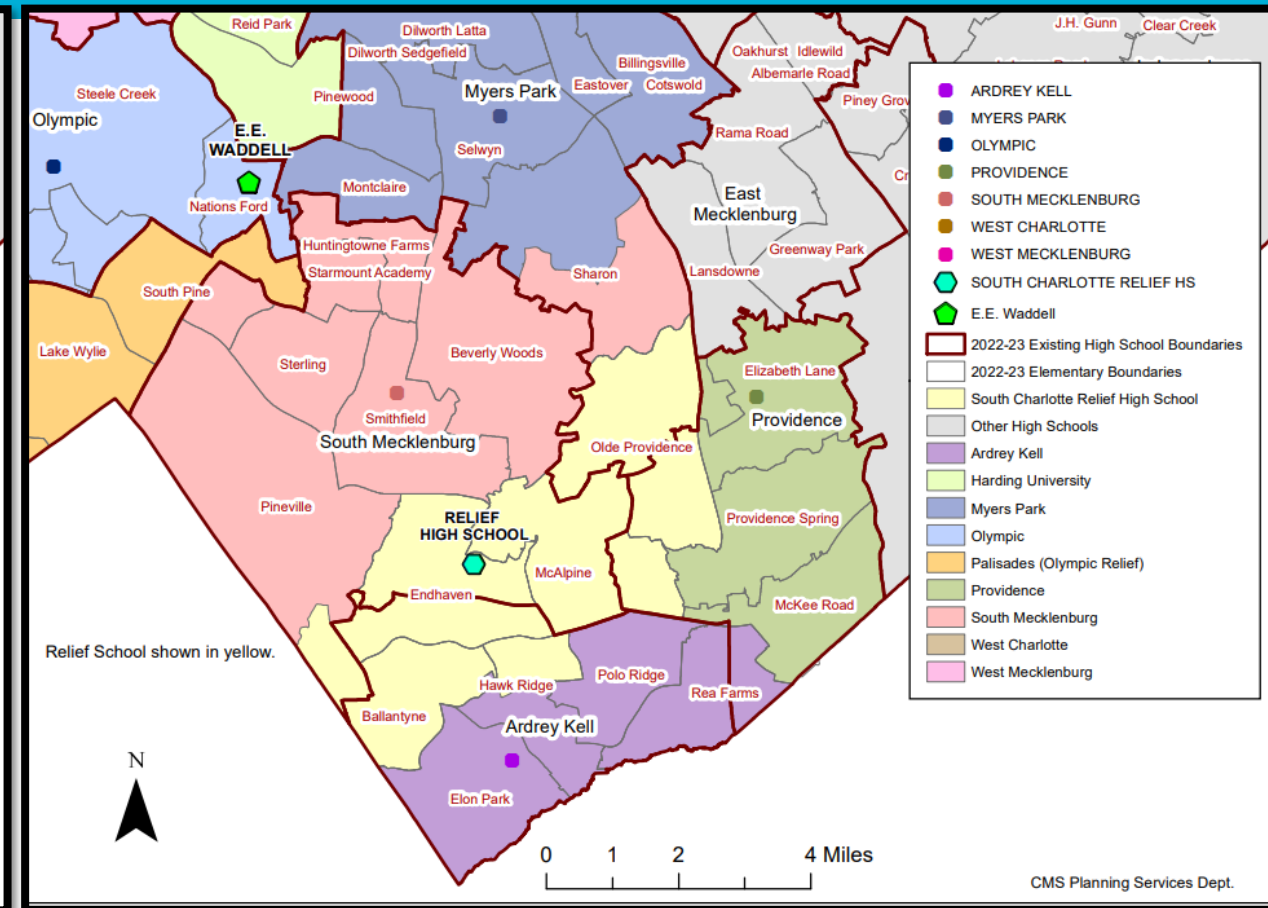
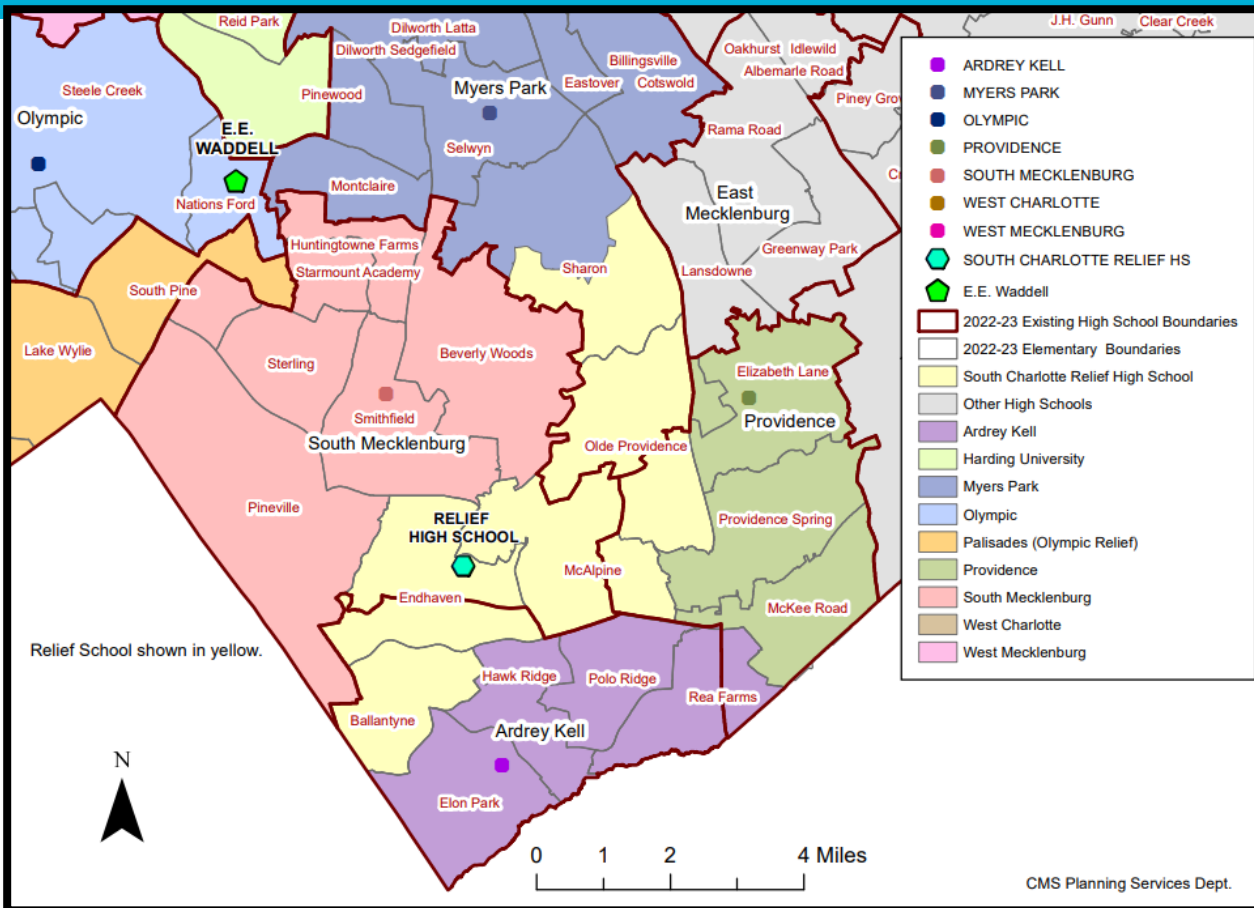
Scenario Iterations

Nov 14, 2022

Overview of current DRAFT scenarios the district is working on

Previous Iterations

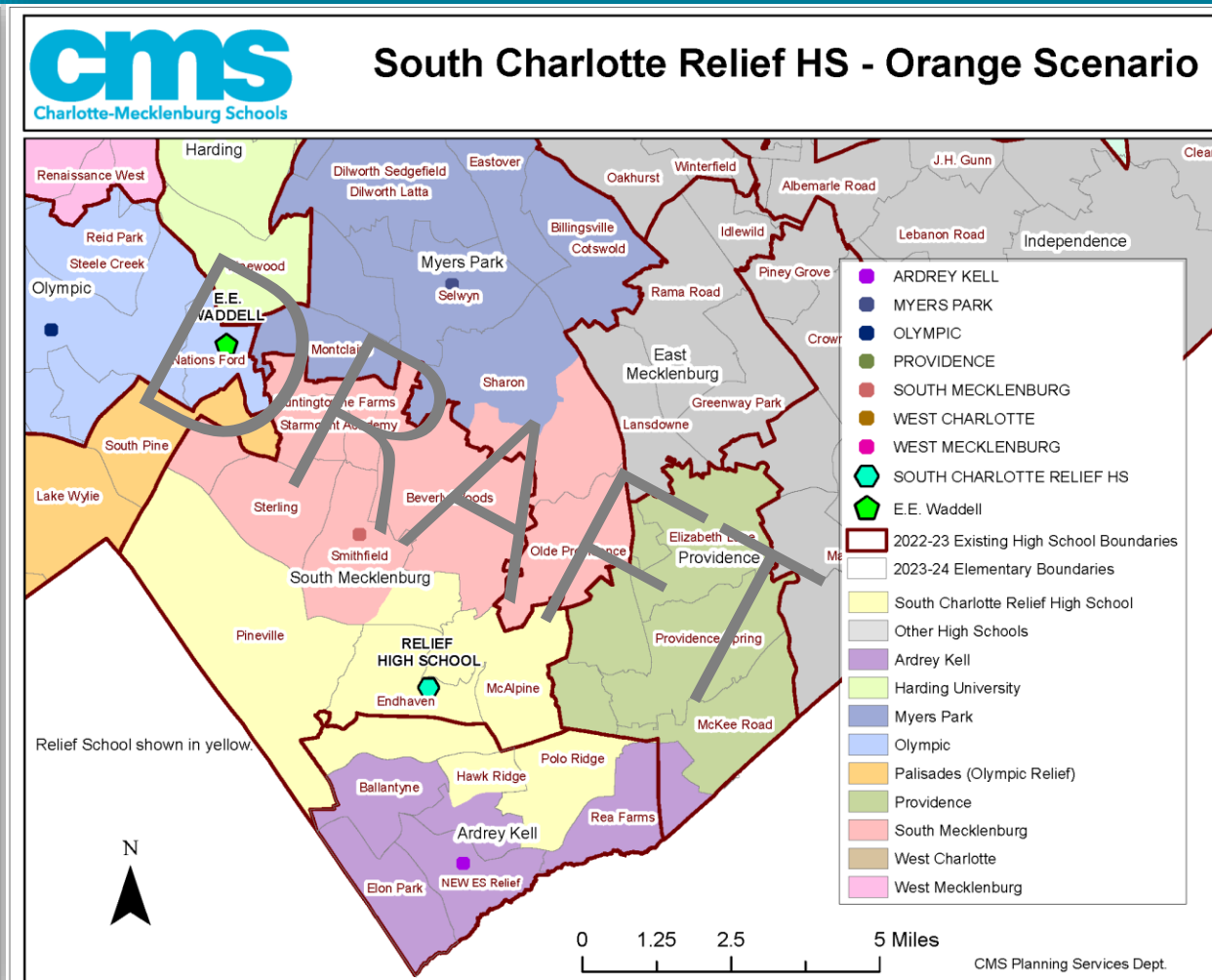
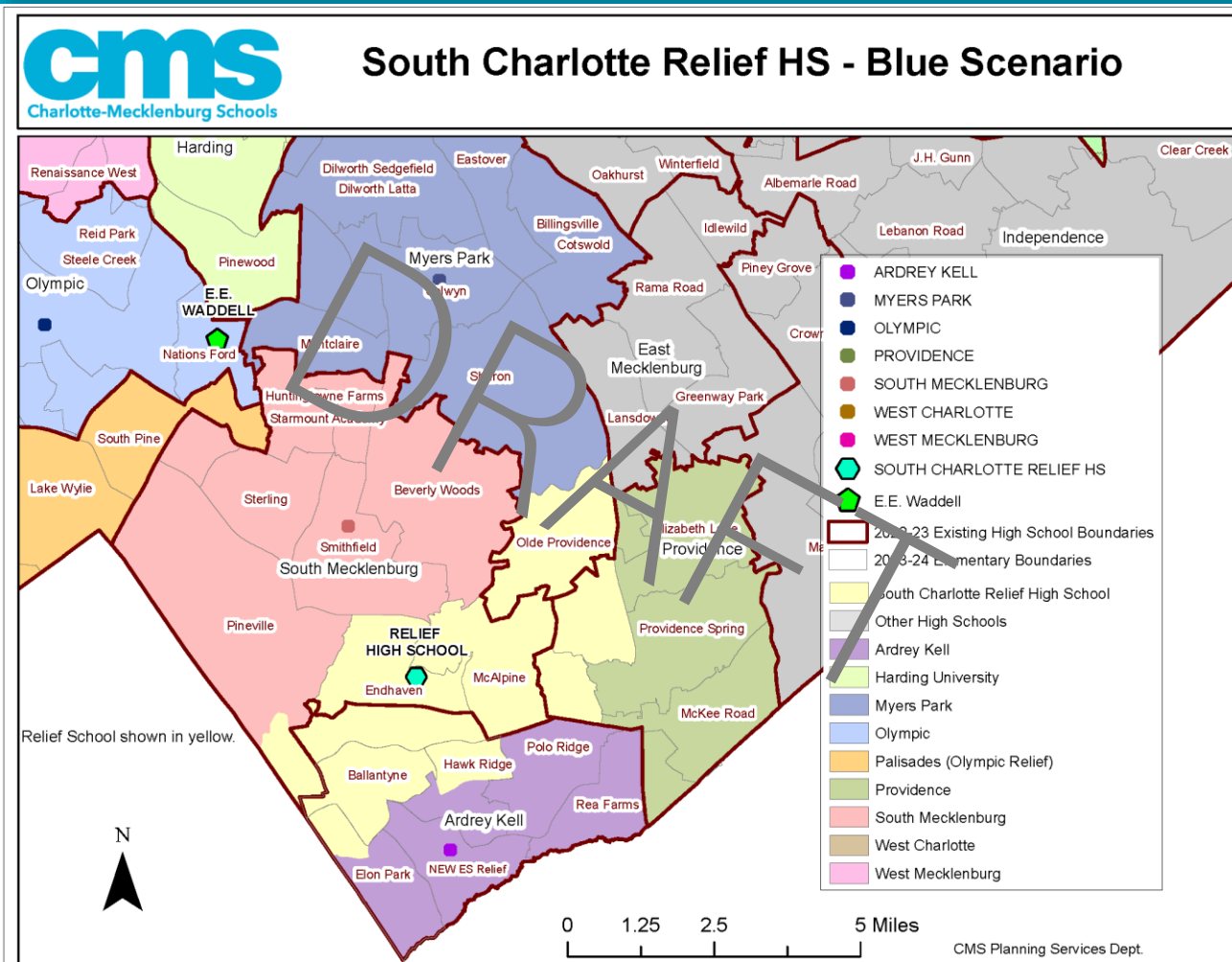
Scenarios Pink and Purple (April 2022)



Current DRAFT iterations

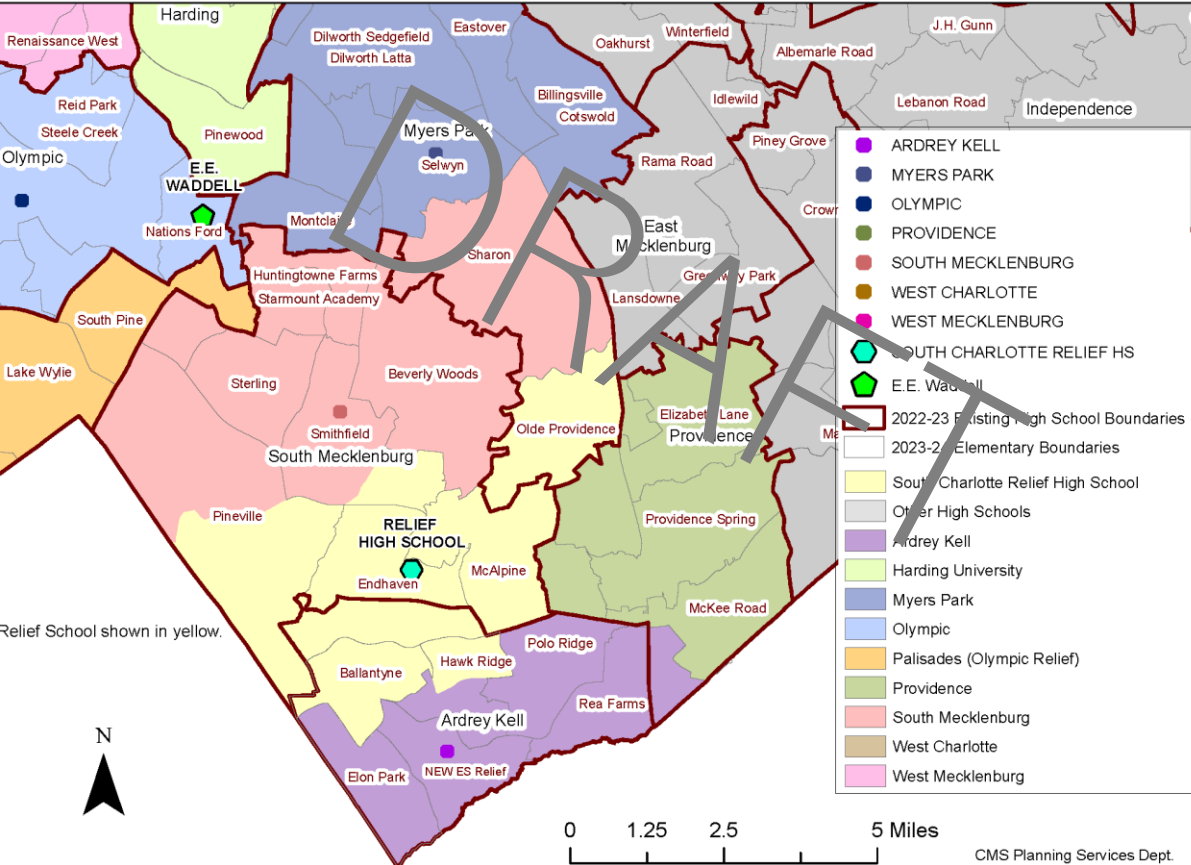
These will be narrowed down to around 3, which will be presented for public feedback late November/early December 2022.

Blue and Orange

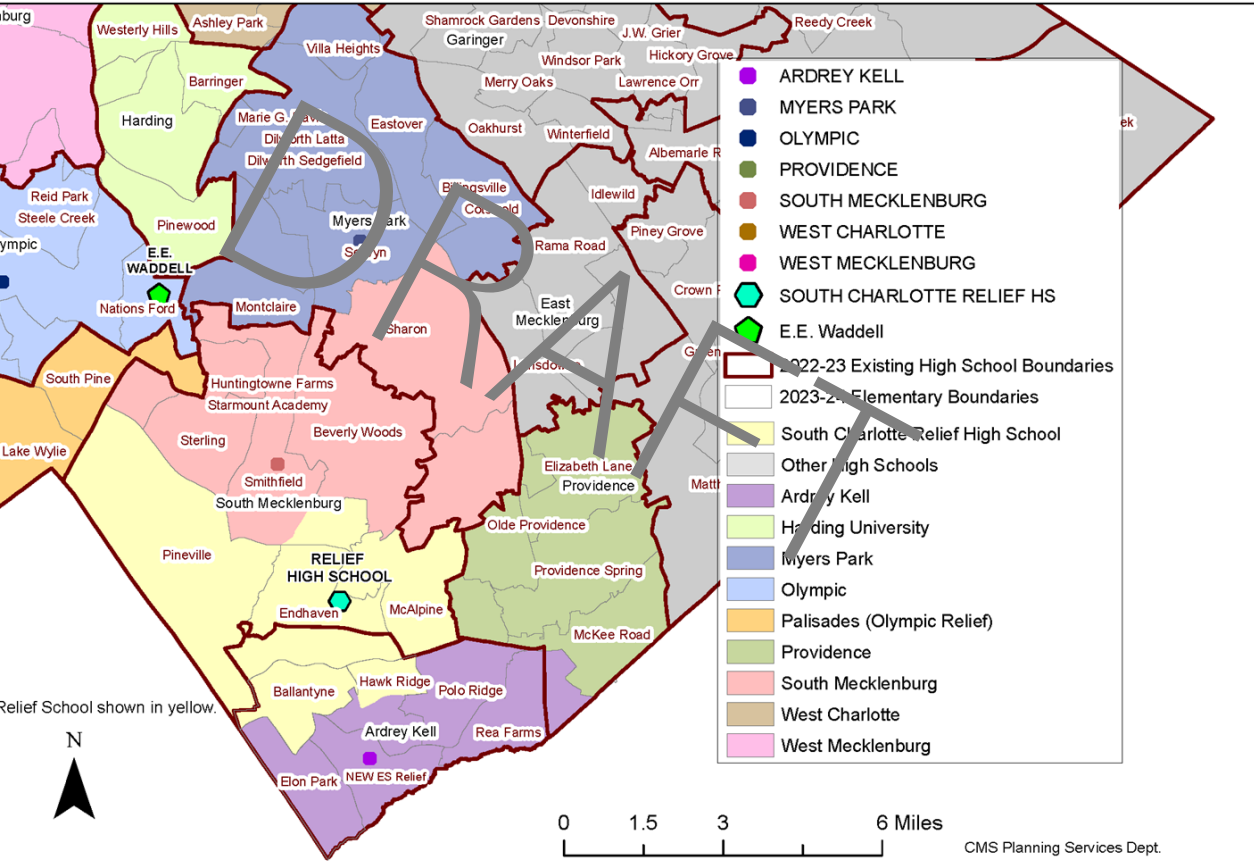


Yellow and Violet

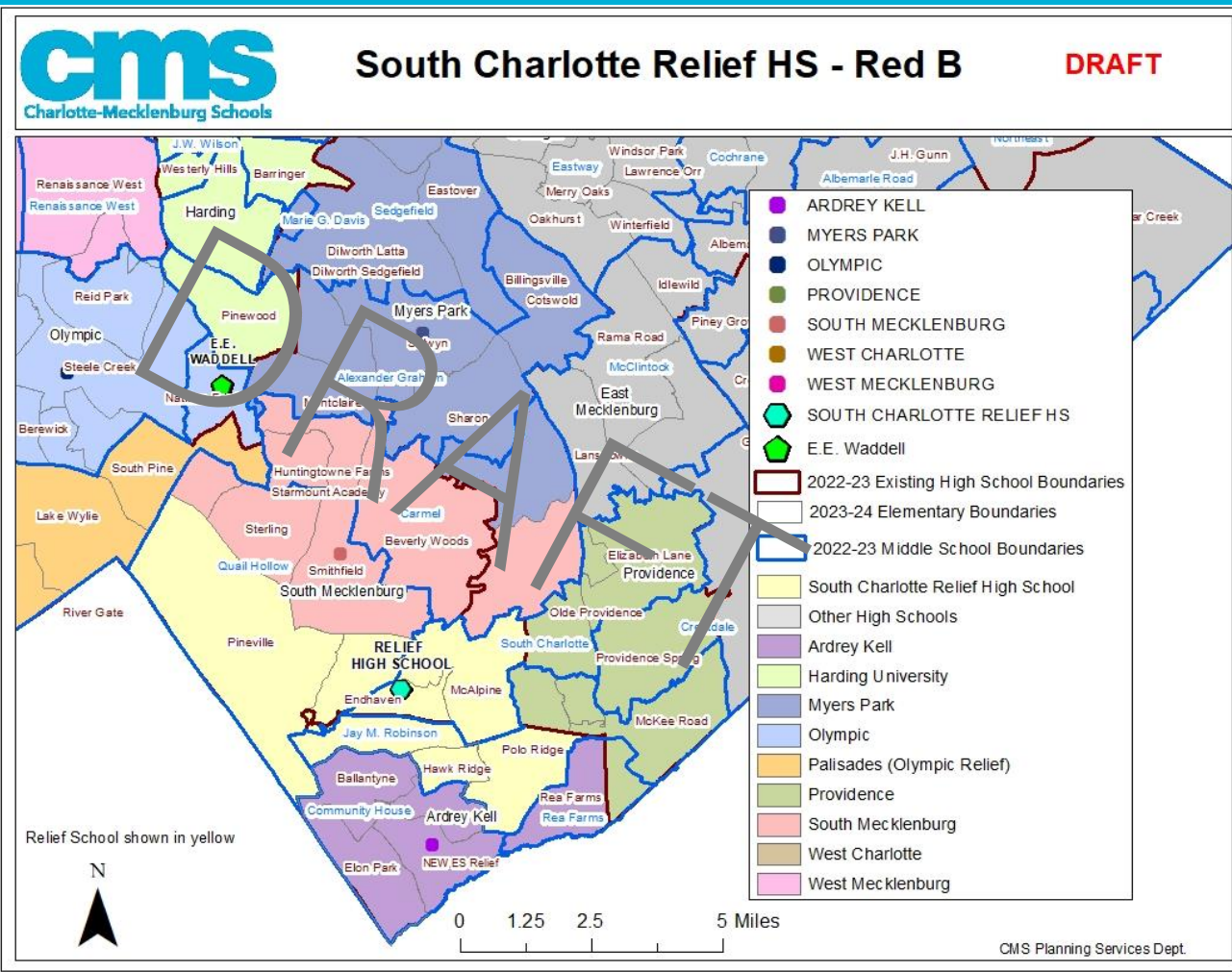
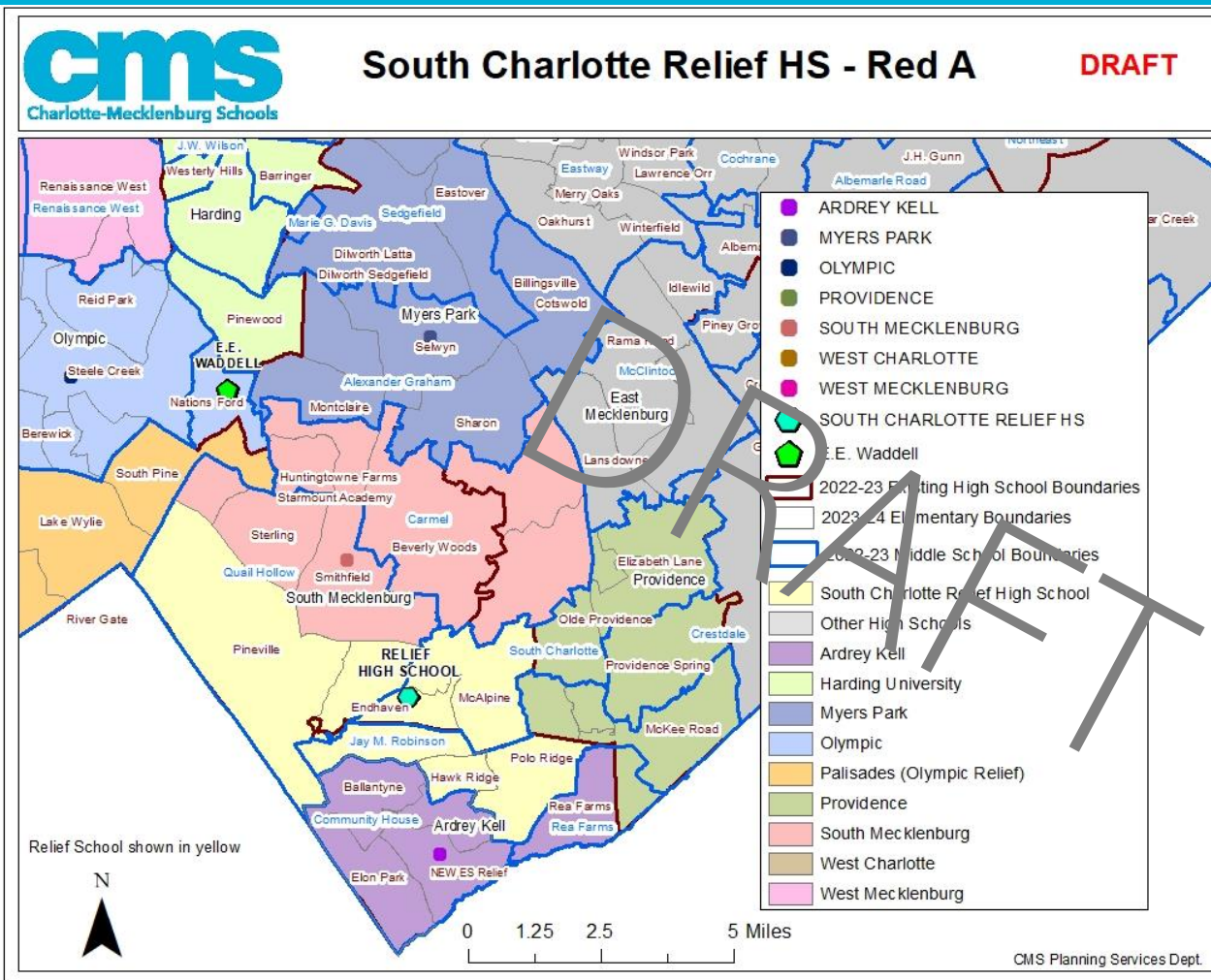
South Charlotte Relief HS - Yellow Scenario



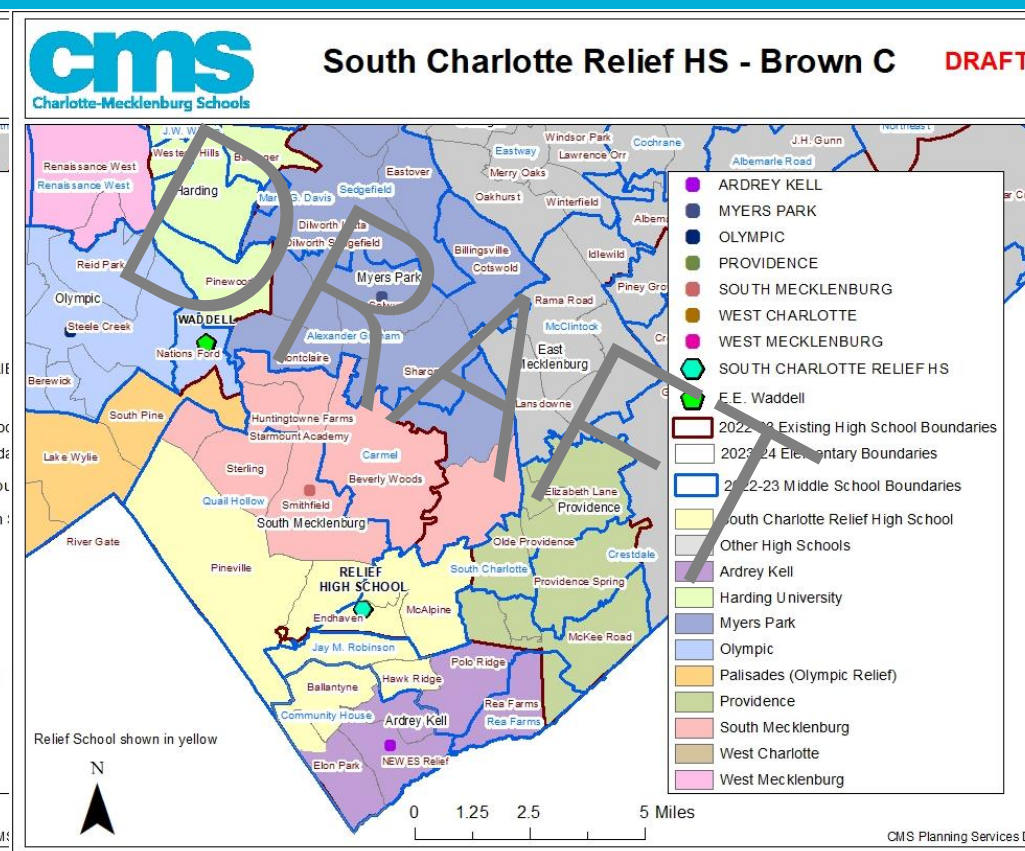
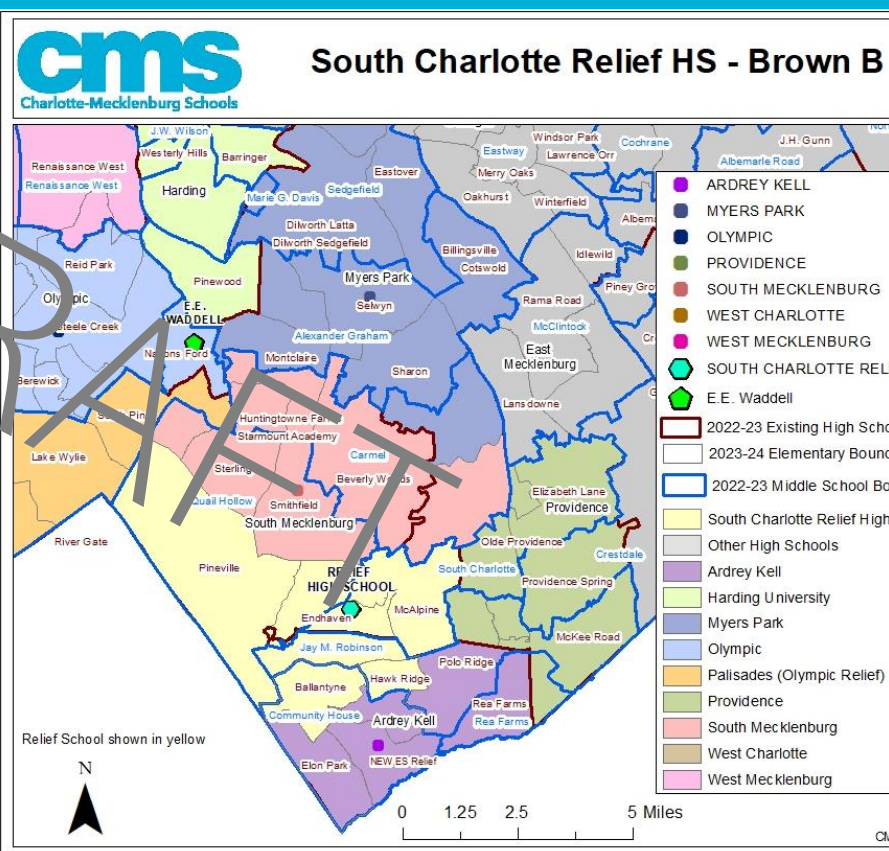
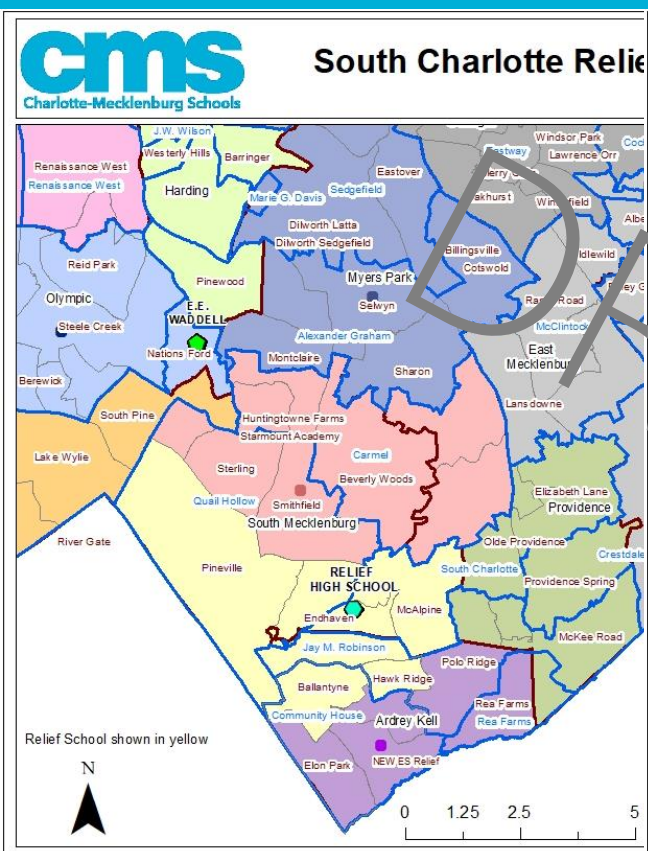
South Charlotte Relief HS - Violet Scenario



Red A and B



Brown A, B, C



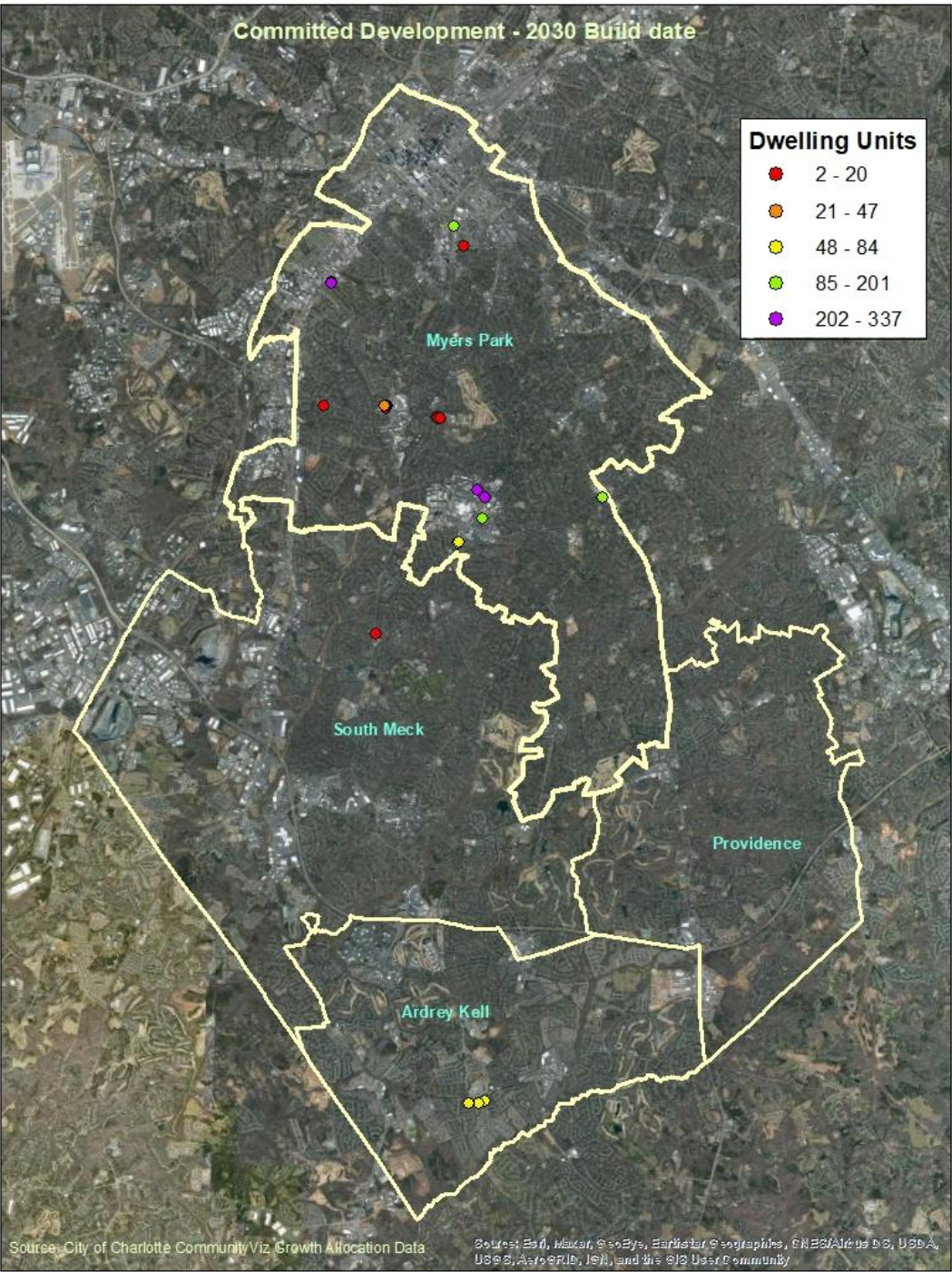
Other Considerations

- Magnet programs: Language Magnet at South Meck, IB at Myers Park
- Grade progressions – grade sizes in upcoming 5-10 years (current elementary and middle school students)
 - Larger cohorts in the pipeline for South Meck
 - Smaller cohorts for Ardrey Kell
 - Steady cohorts for Myers Park
- Anticipated student growth based on residential development (see next slides)

Committed Development – by 2030 Build date

Committed development: Lots or parcels that have been approved for development but not yet built in the region.

Ardrey Kell	Dwelling Units	ES	MS	HS	Total Students
SF Detached	16	4	2	4	10
SF Attached	204	31	13	24	68
Multifamily	NA	NA	NA	NA	NA
Myers Park	Dwelling Units	ES	MS	HS	Total Students
SF Detached	10	3	1	1	5
SF Attached	48	1	1	1	3
Multifamily	2061	189	88	101	378
South Meck	Dwelling Units	ES	MS	HS	Total Students
SF Detached	NA	NA	NA	NA	NA
SF Attached	20	3	1	2	6
Multifamily	NA	NA	NA	NA	NA



Source: 2019 City of Charlotte CommunityViz Growth Allocation data that was developed as part of the Charlotte Future 2040 Comprehensive Plan

Ballantyne Reimagined

Phase 1 (5-6 years from 2021)

**1030 multi-family
units**

Estimated total student yield

355

Estimated elementary student yield

203

Estimated middle school student yield

75

Estimated high school student yield

75

Phase 2 (6-12 year Period)

**1050 multi-family
units**

361

207

77

77

**300 single-family
attached units**

103

59

22

22

Phase 3 (would require new Traffic Impact Study and major transportation event)

1890 multi-family units

651

373

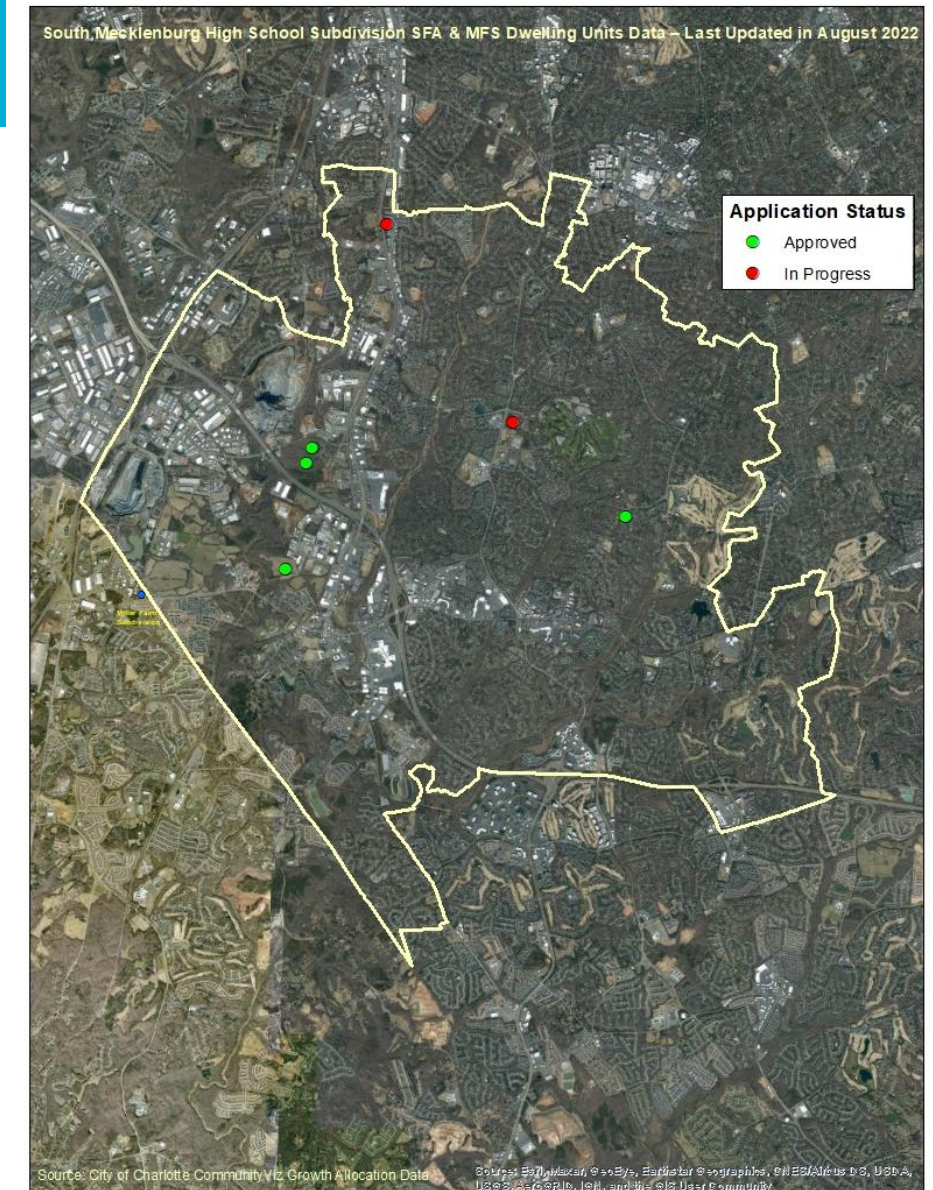
139

139

South Mecklenburg High School Subdivision Data – Last Updated in August 2022

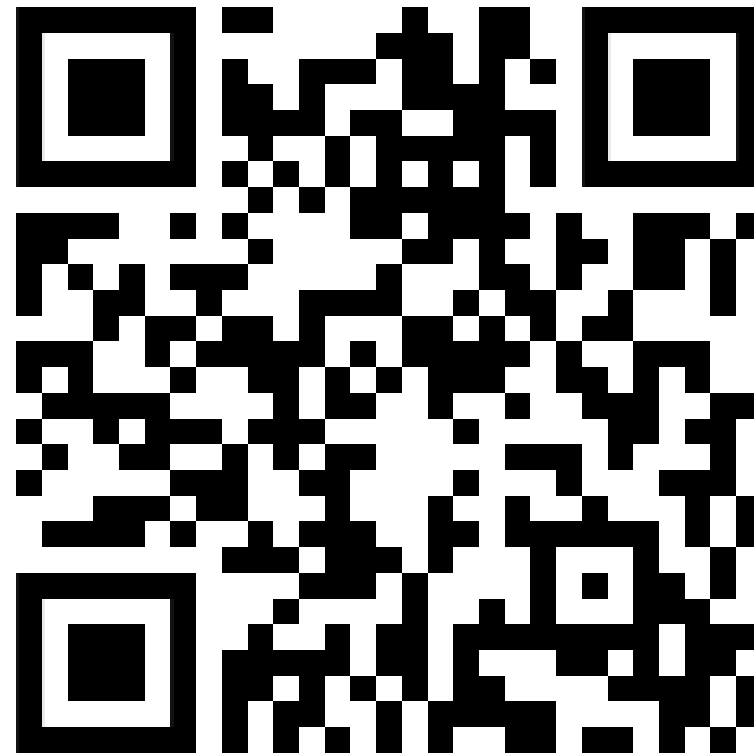
	352 single-family attached	344 multi- family units
Estimated total student yield	117	118
Estimated elementary student yield	54	68
Estimated middle school student yield	22	25
Estimated high school student yield	41	25

Source: City of Charlotte Subdivision Data



Your Input

Brief feedback form:
<https://forms.gle/XZzsvipk2kznLgDi8>



Next Steps

- We will be narrowing down to around 3 scenarios to present publicly with data on each of the four Board priorities by scenario late Nov/early Dec for feedback
The survey will be posted on the [CMS Planning site](#) and shared with each of the schools in the impacted area.
- Ongoing: small group conversations with parents, CMS staff and students to provide information, collect feedback, and answer questions – please reach out to the Planning Director to schedule (claire1.schuch@cms.k12.nc.us).
- Best practices interviews with leaders in CMS and other districts who have recently opened new high schools.
- There will be a large public session early January (exact date and location TBD, will be in-person) to share updated scenarios based on the feedback received.

Thank you