

# **Superintendent’s Recommendation on South County Relief Schools and Magnet Changes**

## **South County Student Assignment and Magnet Detailed Recommendations**

**June 6, 2023**

Agenda Item 6.A - Superintendent’s Recommendation on South County Relief Schools and Magnet Changes

### **Student Assignment Detailed Recommendations**

#### **A. General Recommendations**

##### **A.1 - Myers Park/Providence/South Mecklenburg High Schools, Rising 9th Graders Early Reassignment Option**

Recommendation: Rising Myers Park High School freshmen (in 2023-2024) reassigned to South Mecklenburg or Providence high schools (as outlined below) may choose to enroll in 9th grade at their to-be-assigned school, with transportation provided.

Details: Current (2022-2023) 8th graders who are otherwise assigned to attend Myers Park High School in the 2023-2024 school year as 9th graders; and who are being reassigned to either South Mecklenburg or Providence high schools concurrent with the opening of the New Relief High School, may start at their newly assigned school in the Fall of 2023, with transportation provided, in order to start at the high school from which they will graduate. Students who elect to remain at Myers Park High School in 2023-2024 will be reassigned to South Mecklenburg or Providence high schools when the New Relief High School opens. Acceptance of this option must be made, in writing, on or before the close of business June 16th, 2023.

##### **A.2 - Ardrey Kell/Myers Park/South Mecklenburg High Schools, “Legacy Enrollment” for Student Assignment**

Recommendation: Rising seniors at the time the New Relief High School opens will remain at the high school which they attended prior to the opening of the New Relief High School, with transportation. Rising juniors at the time the New Relief High School opens shall have an option to remain at the high school which they attended previously, without provision for transportation.

Details: Consistent with past practice, rising seniors who would otherwise be reassigned upon the opening of a relief school are allowed to remain at, and graduate from, the high school to which they were previously assigned and had attended; these students will continue to be eligible for transportation to their previously assigned high school in order to graduate from the school they have attended. Despite opening the New Relief High School with grades 9 through 11, rising juniors will also have the option to remain at their previously assigned and attended high school, although without

transportation eligibility. Acceptance of this option must be communicated on or before June 10 of the year in which the New Relief High School will open. Transportation will be provided to all juniors who accept assignment to their new high school attendance boundary. There is no sibling guarantee associated with either of these legacy enrollment options.

### **A.3 - Myers Park International Baccalaureate (IB) Program “Legacy Enrollment”**

Recommendation: Freshmen in 2022-2023/rising sophomores in 2023-2024 who satisfy all requirements for the International Baccalaureate (IB) diploma program, and who would otherwise be reassigned to South Mecklenburg High School, will have the option to remain at Myers Park High School, without transportation, provided they continue to meet the requirements for an IB diploma.

Details: Students who are rising sophomores in 2023-2024; and who have satisfied all prerequisites for continued eligibility to receive an International Baccalaureate (IB) diploma; and who would have been reassigned to South Mecklenburg High School upon the opening of the New Relief High School, will have the option to remain at Myers Park High School so long as they continue to satisfy the requirements of the IB diploma program. Transportation will not be provided. Students who do not continue to maintain their eligibility for an IB diploma will be exited from Myers Park High School and reassigned to their neighborhood school, with transportation. These students will also retain their eligibility to apply for another magnet program. Students who are reassigned to Providence High School from Myers Park will be guaranteed a seat in the IB program at East Mecklenburg High School. No sibling guarantee is associated with the option for Myers Park IB diploma students.

### **A.4 - Impacted Middle Schools “Legacy Enrollment”**

Recommendation: Rising 8th graders at the time the New Relief Middle School opens shall have the option to remain at their previously assigned middle school, without transportation.

Details: Any rising 8th grader who is reassigned as a result of the boundary changes associated with the opening of the New Relief Middle School will have the option to remain at the middle school to which they had previously been assigned and had attended. Students exercising this option will not receive transportation; transportation will be provided to the newly-assigned middle school only. No sibling guarantee is provided to students exercising this option. Acceptance of this option must be communicated on or before June 10 of the year in which the New Relief Middle School will open.

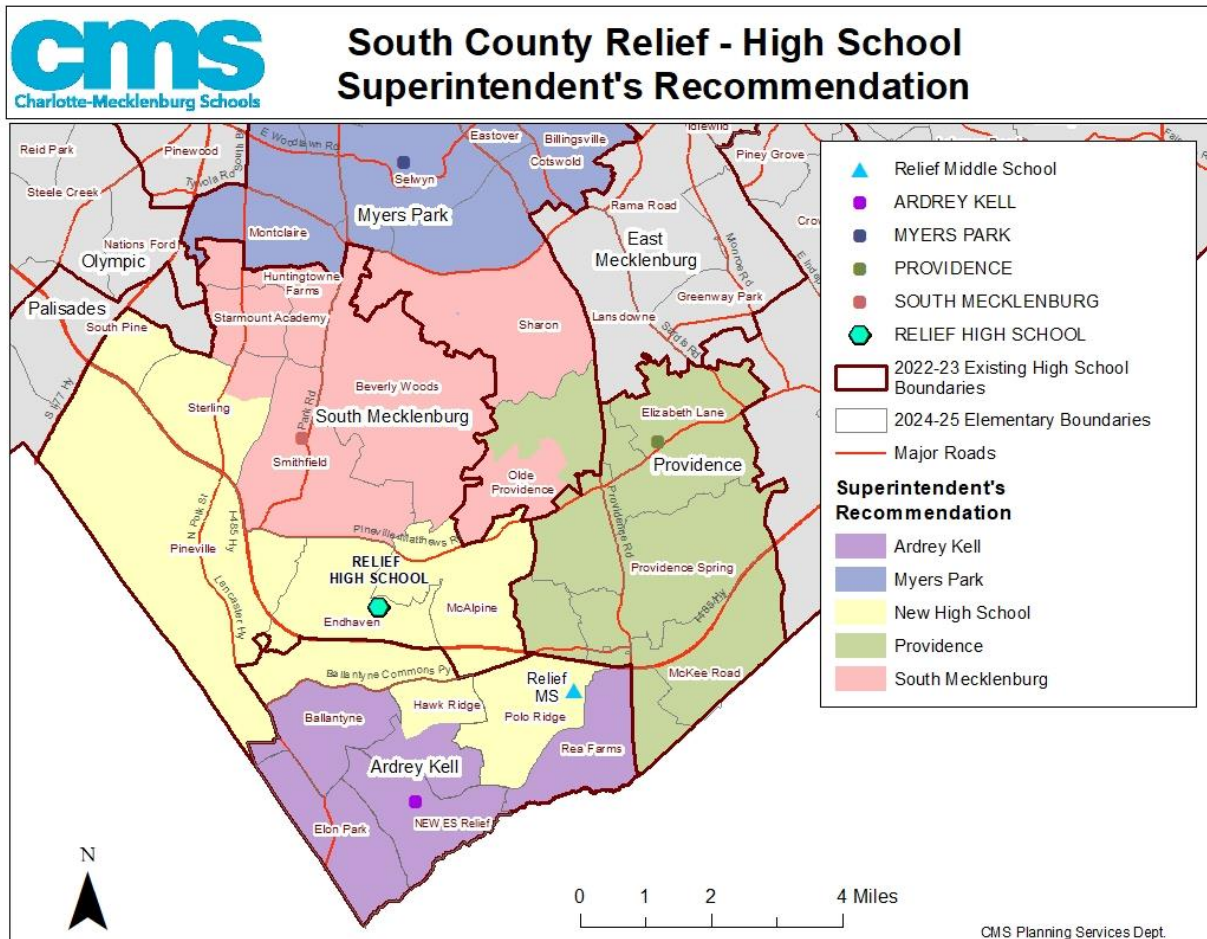
### **A.5 - Transfer Requests**

Notwithstanding the foregoing, students will retain the right to request transfers as outlined by Charlotte-Mecklenburg Board of Education Policy S-RASG and regulation S-RASG/R. Transfers and athletic participation hardship waivers will be reviewed and approved as consistent with the applicable policies and regulations.

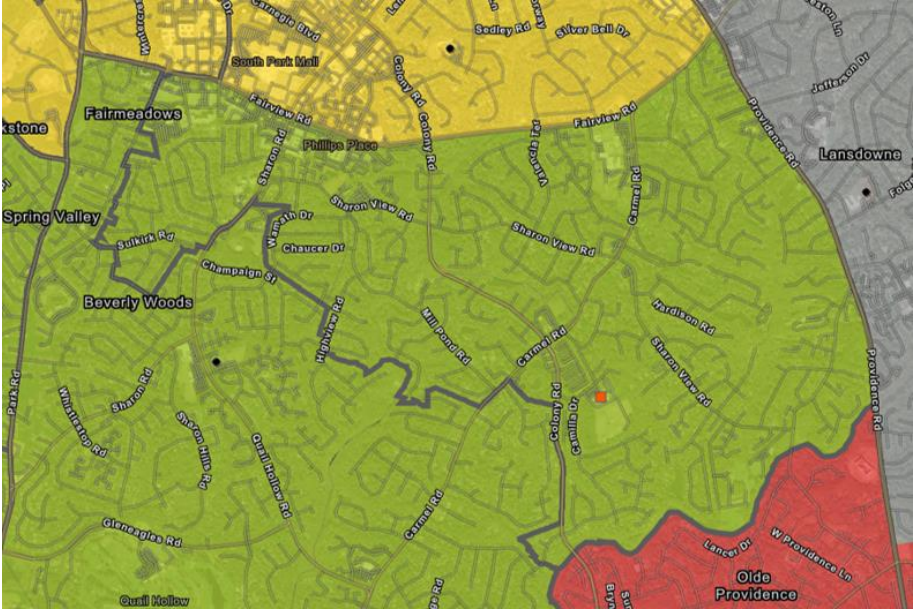
**B. Ardrey Kell/Myers Park/Providence/South Mecklenburg High School Boundary Changes**

Recommendation: To relieve overutilization conditions at Ardrey Kell, Myers Park, and South Mecklenburg high schools, and to support the opening of the New Relief High School, the boundaries of the identified schools are modified as described below upon the opening of the New Relief High School.

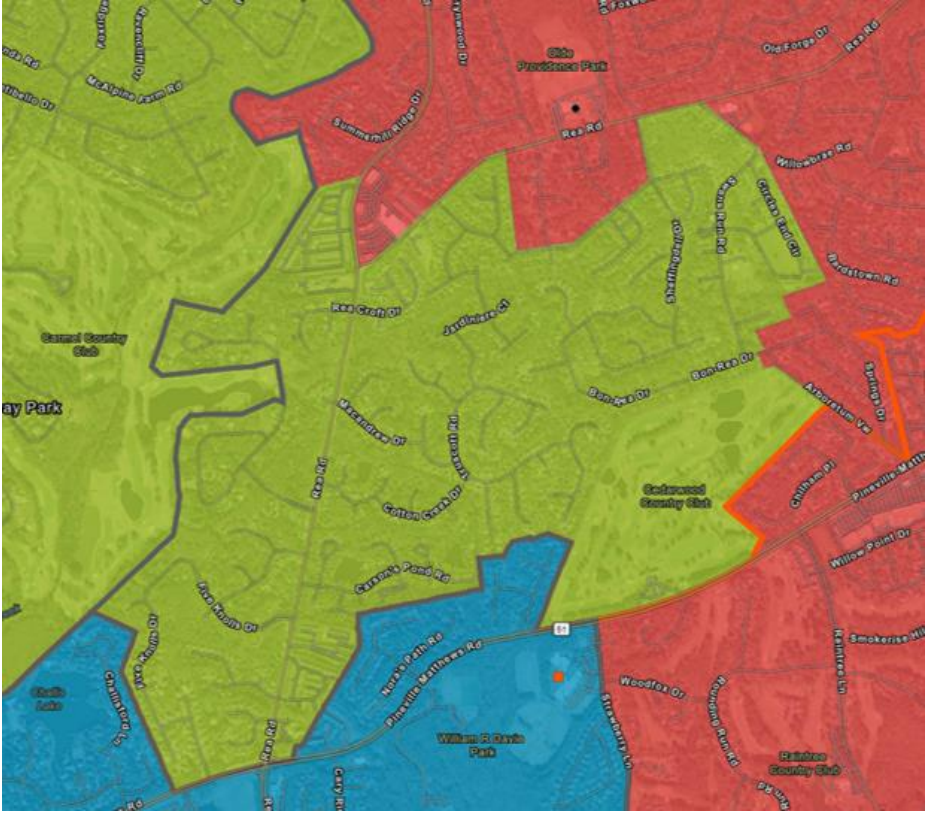
Details: In order to relieve overcapacity situations at Ardrey Kell, Myers Park, and South Mecklenburg high schools, the following changes will take effect with the opening of the New Relief High School:



Reassigned from Myers Park High School to South Mecklenburg: Part of the current Sharon Elementary boundary, specifically students south of Fairview Rd and north of McAlpine Creek (green section):

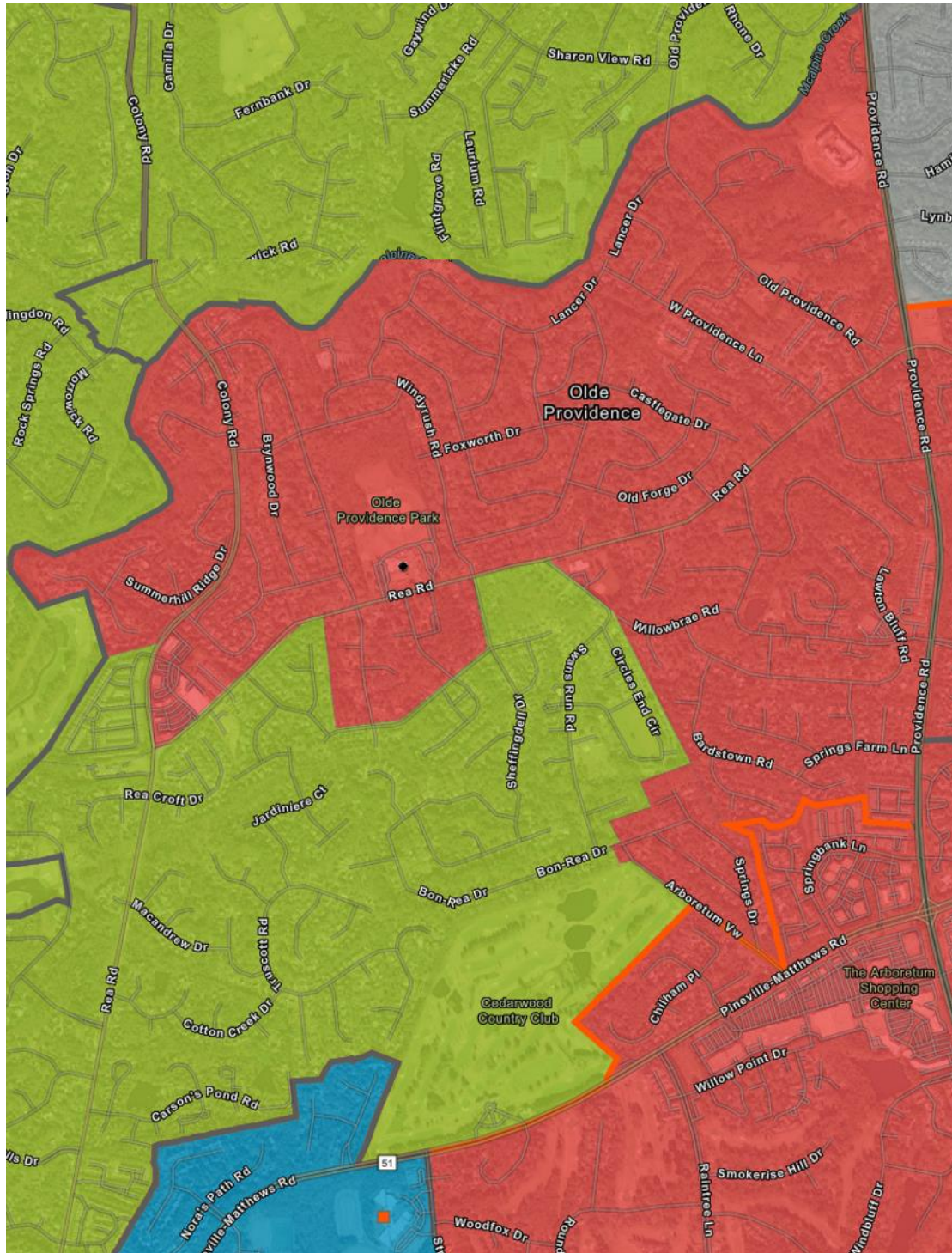


Reassigned from Myers Park High School to South Mecklenburg: Part of the current Olde Providence Elementary attendance boundary, specifically students south of Rea Rd E-W, Windyrush E-W, Windyrush N-S, and west of Willowbrae Rd, as shown in this map (green section):





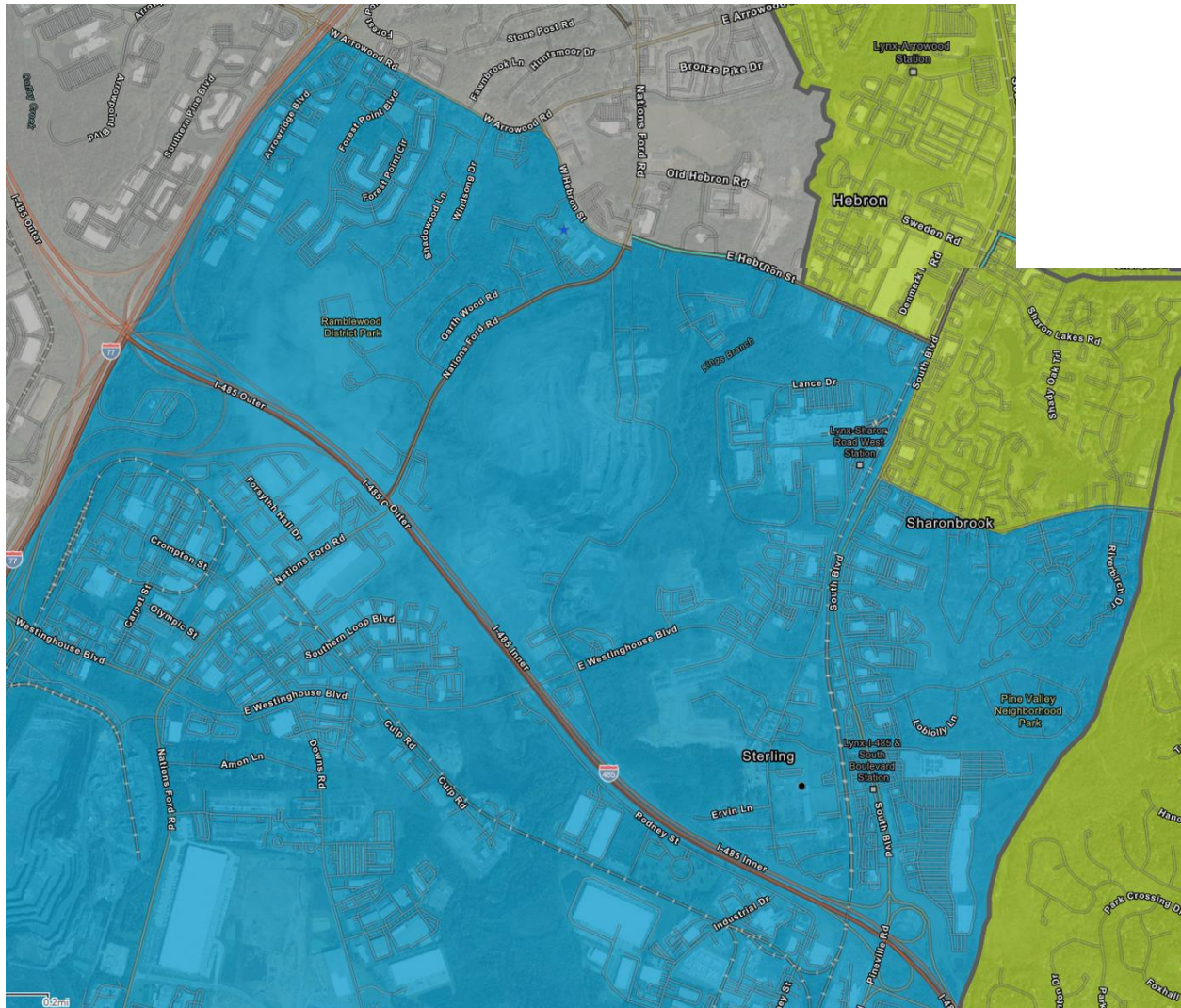
Reassigned from Myers Park High School to Providence: Part of the current Olde Providence Elementary attendance boundary, specifically students south of McAlpine Creek, north of Rea Rd E-W, North of Windyrush E-W, west of Windyrush N-S, and east of Willowbrae Rd (red section):





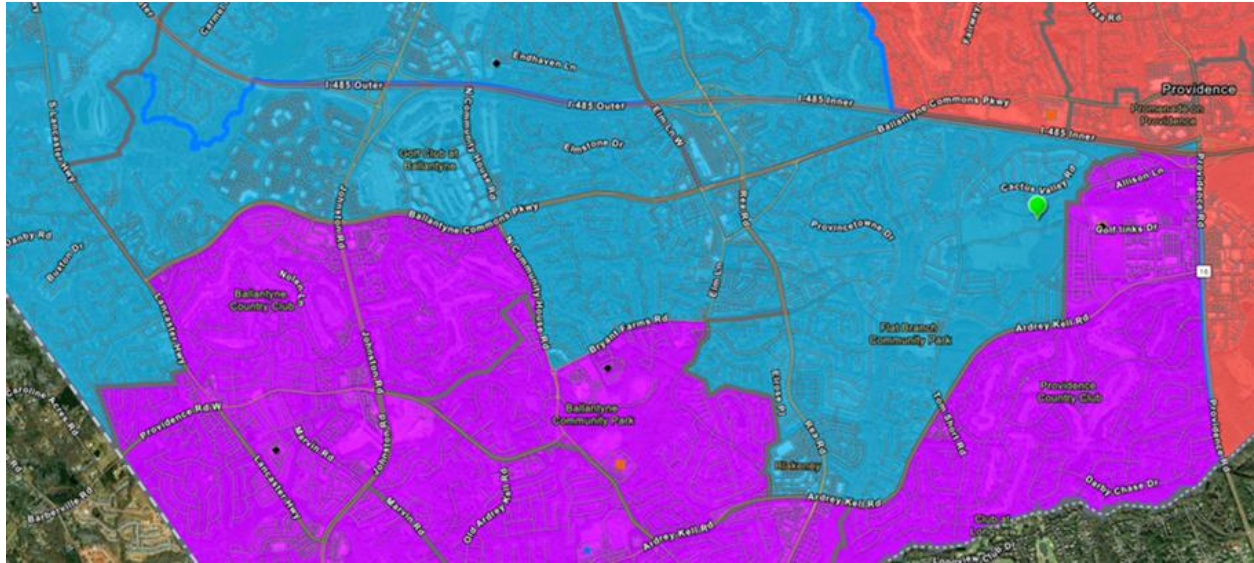
Reassigned from South Mecklenburg High School to the New Relief High School:

- The current Pineville Elementary area
- The current Endhaven Elementary area
- The current McAlpine Elementary area that attends South Mecklenburg High School, with the section attending Providence High School remaining at Providence.
- The current South Pine Elementary School section that currently attends South Meck, i.e. east of I-77, north of I-485, west of Nations Ford Rd, and south of W Arrowood Rd and W Hebron St (blue area in the map below).
- The current Sterling Elementary School section east of Nations Ford Rd, north of I-485, south of East Hebron St and Sharon Rd W, and West of Little Sugar Creek (blue area in the map below):



Reassigned from Ardrey Kell High School to the New Relief High School:

- The section of Endhaven Elementary that currently attends Ardrey Kell High School, i.e. north of Ballantyne Commons Pkwy and south of I-485 (blue area in the map below).
- The section of Hawk Ridge Elementary attendance area south of Ballantyne Commons Pkwy, north of Bryant Farms Rd, west of Elm Ln, and east of N Community House Rd (blue area in the map below).
- All of the current Polo Ridge Elementary area (blue area in the map below):

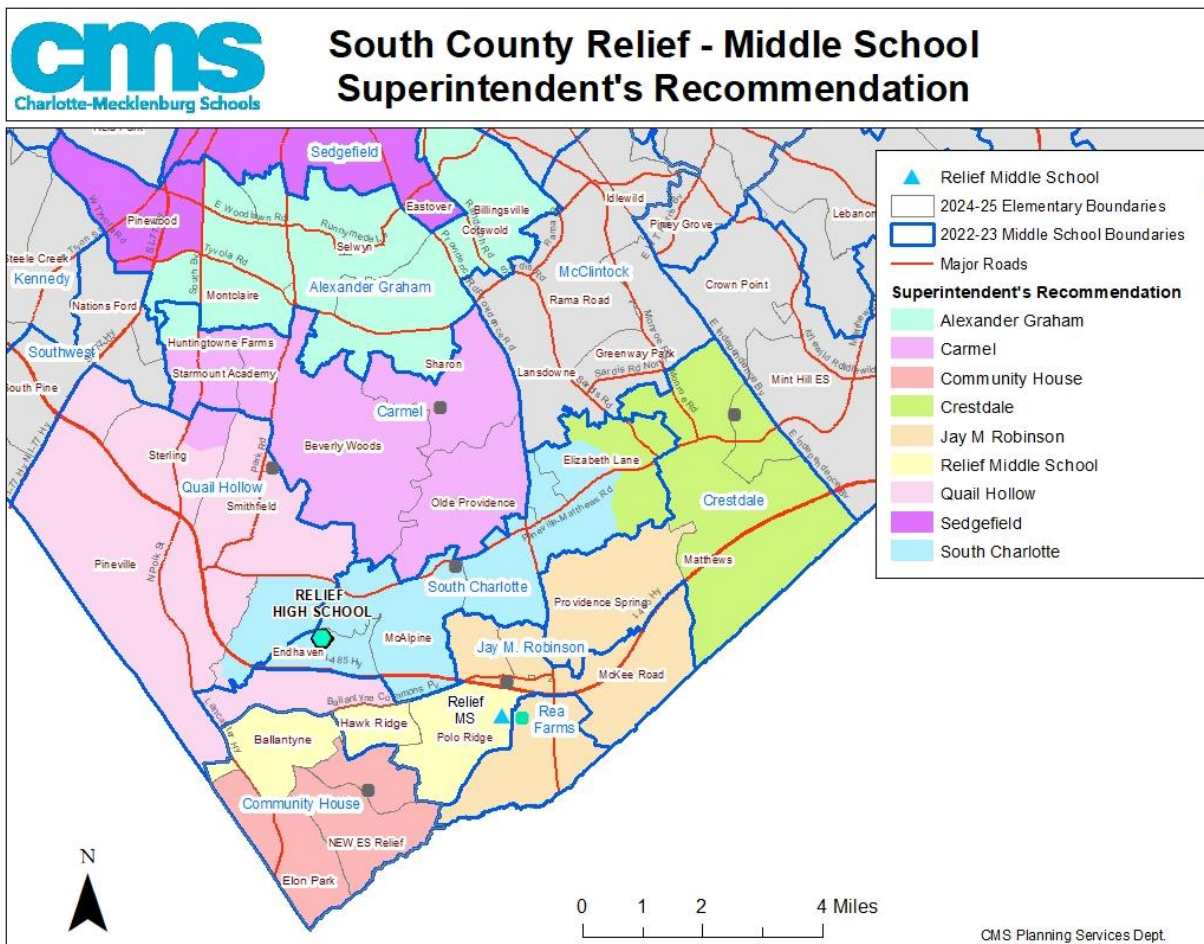




**C. Sedgefield Middle School/Alexander Graham Middle School/Carmel Middle School/Quail Hollow Middle School/Jay M. Robinson Middle School/Crestdale Middle School/Community House Middle School/South Charlotte Middle School/Rea Farms (6-8) Boundary Changes**

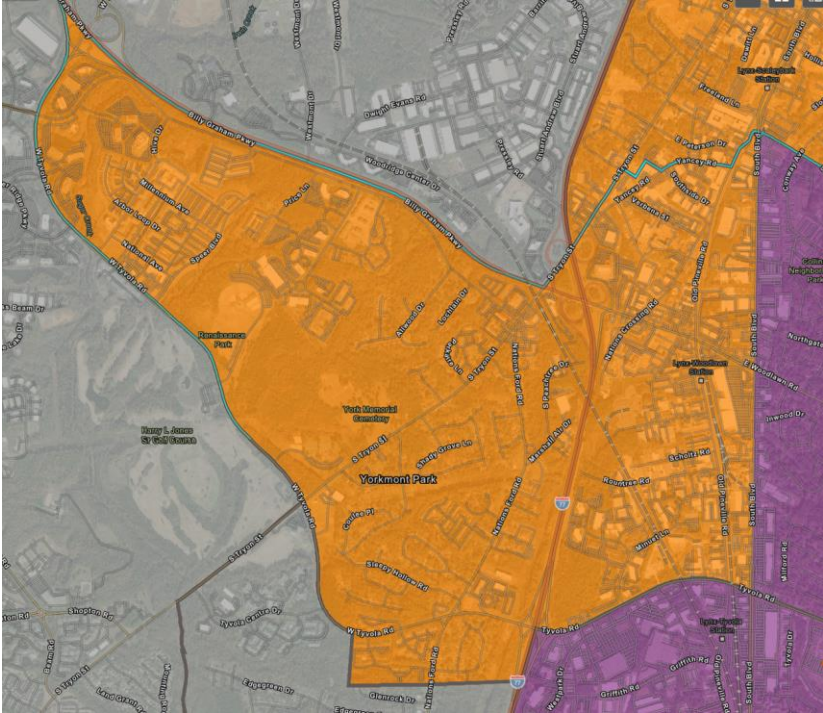
Recommendation: To balance utilization at the aforementioned schools, and support the opening of the New Relief Middle School, effective with the opening of the New Relief Middle School, the boundaries of the identified schools are modified as described below.

Details: In order to relieve overcapacity situations, the following changes will take effect when the New Relief Middle School is opened:

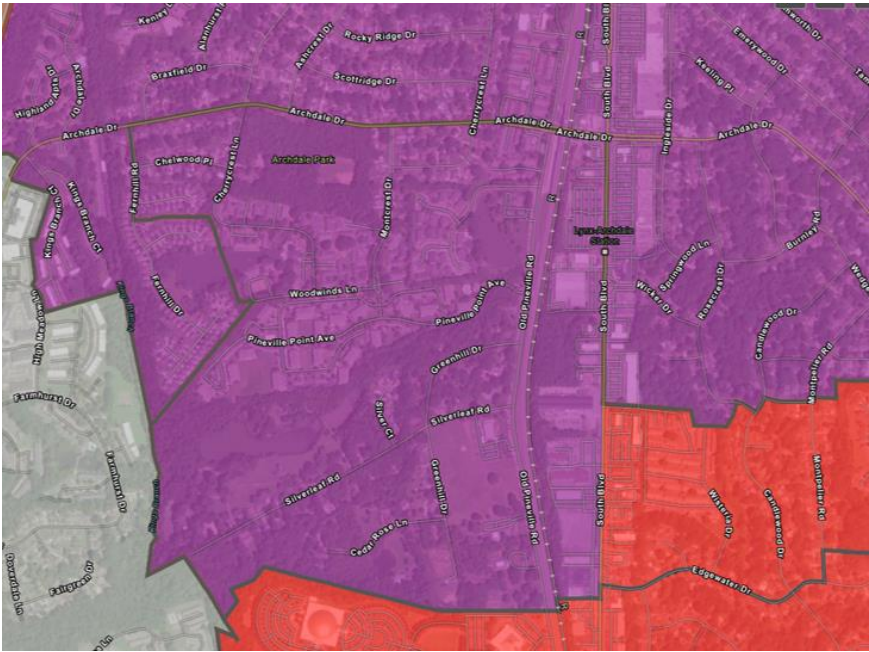




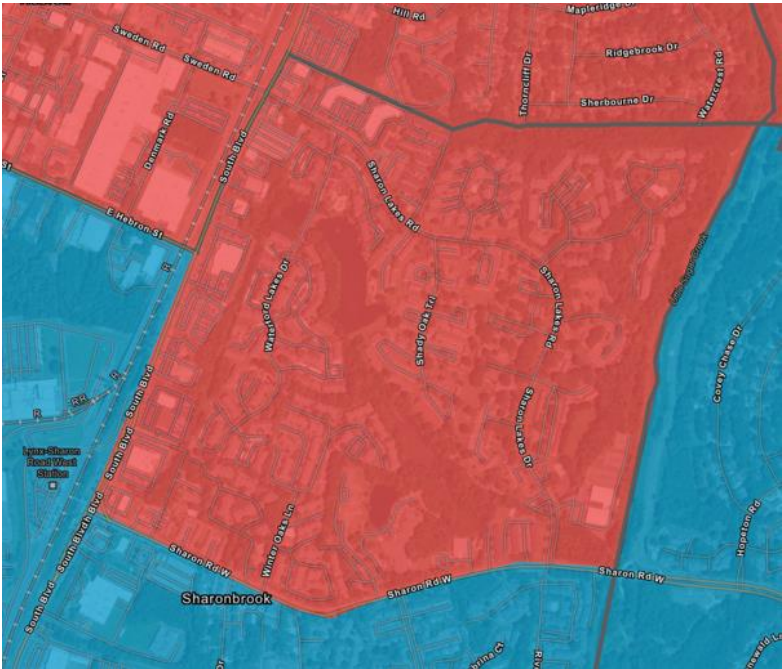
Reassigned from Alexander Graham Middle School to Sedgfield Middle School: The section of Pinewood Elementary that currently feeds to Harding HS, i.e. the area west of S Blvd, south of Yancey Rd and Billy Graham Rd, east of W Tyvola Rd, north of Tyvola Rd (but including a few streets south of W Tyvola Rd - see orange section):



Reassigned from Carmel Middle School to Alexander Graham: The section of the current Huntingtowne Farms Elementary School boundary west of S Blvd, south of Archdale Dr (purple section):



Reassigned from Quail Hollow Middle School to Carmel: The section of Sterling Elementary that is east of S Blvd, north of Sharon Rd W, and west of Little Sugar Creek (red section):

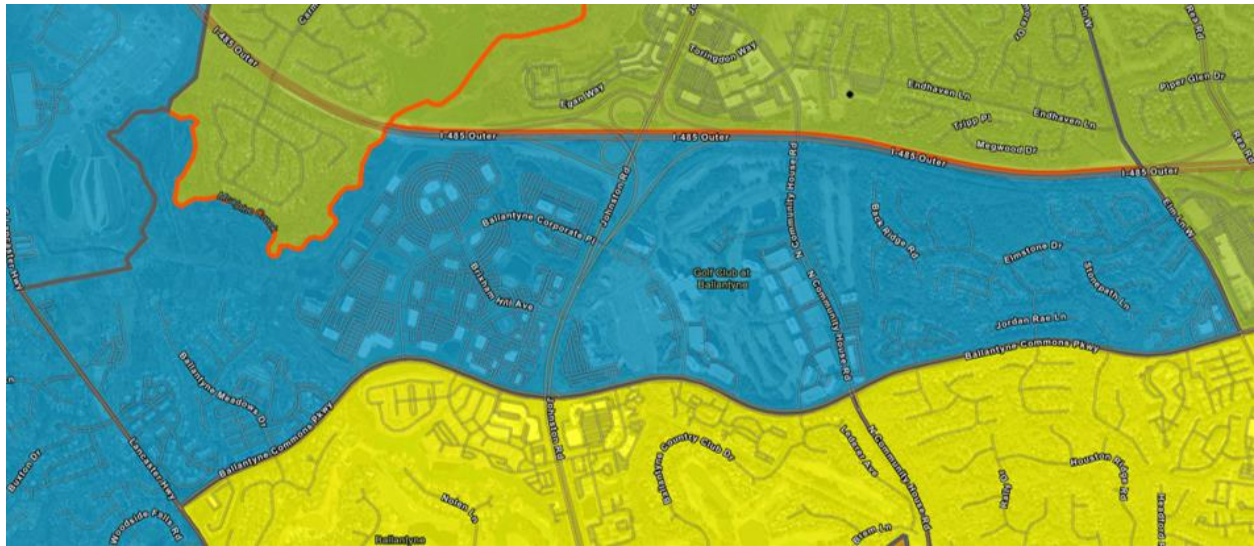


Reassigned from Quail Hollow to South Charlotte Middle School: The section of Endhaven Elementary south of Pineville-Matthews Rd, west of McAlpine Creek, east of McMullen Creek and north of McAlpine Creek and I-485 (green section):

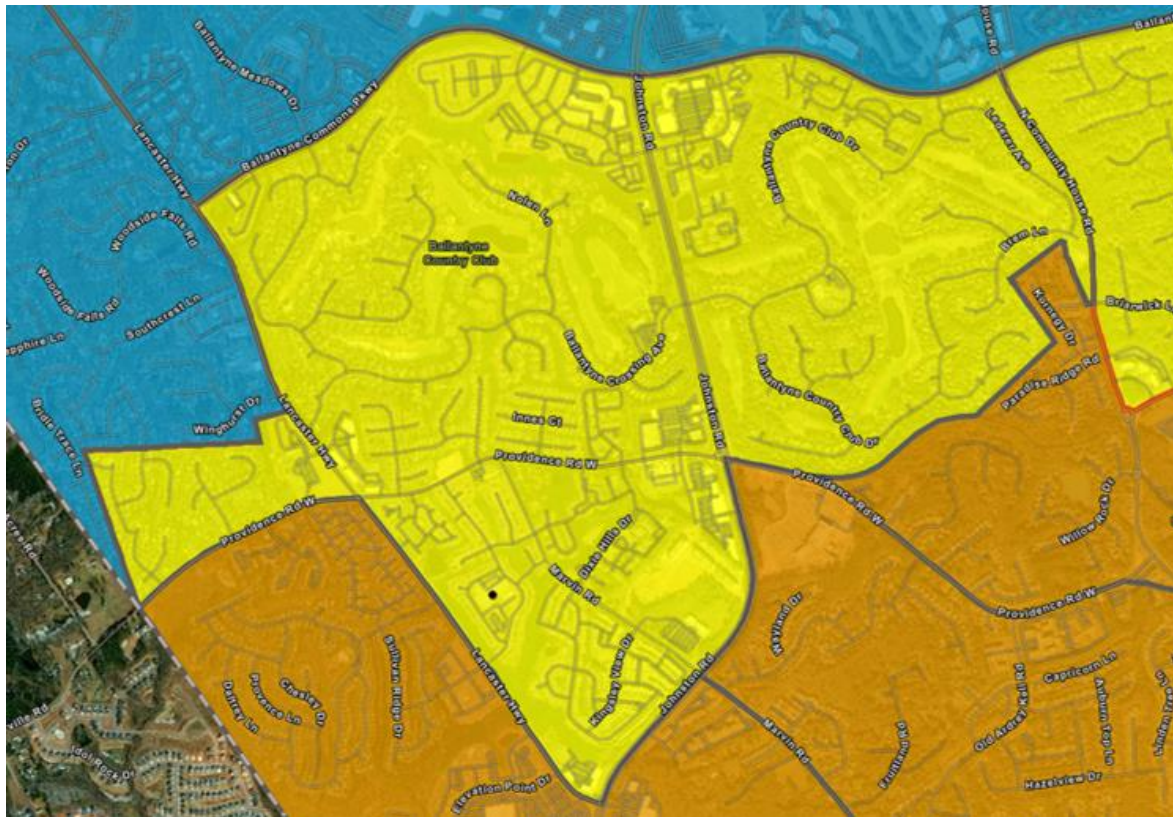




Reassigned from Jay M. Robinson to Quail Hollow Middle School: The section of Endhaven Elementary south of I-485 and McAlpine Creek, west of Elm Ln, north of Ballantyne Commons Pkwy, east of Lancaster Hwy (blue section):

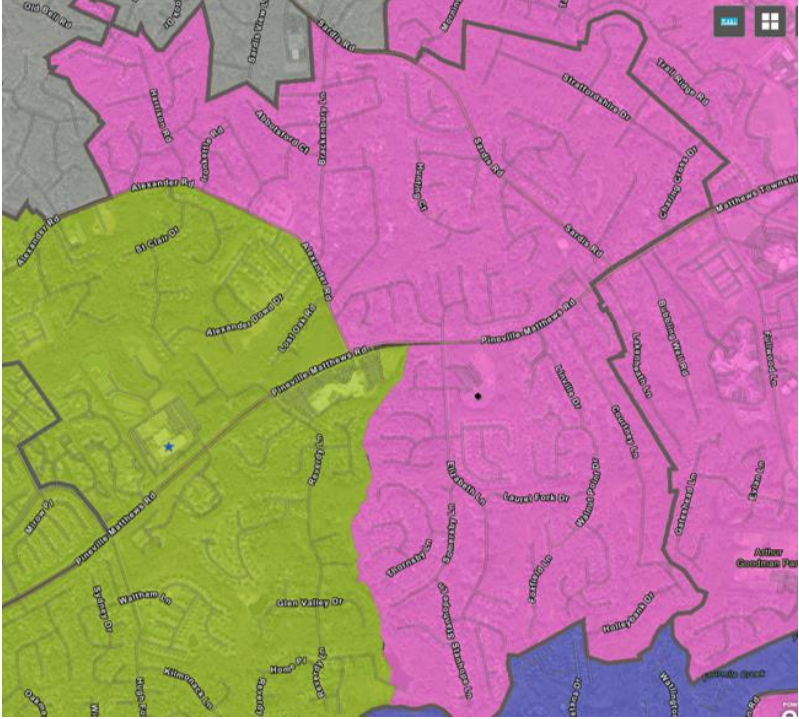


Reassigned from Community House to the New Relief Middle School: The Ballantyne Elementary attendance area as constituted in 2024-2025 school year, and west of N Community House Rd (yellow section):



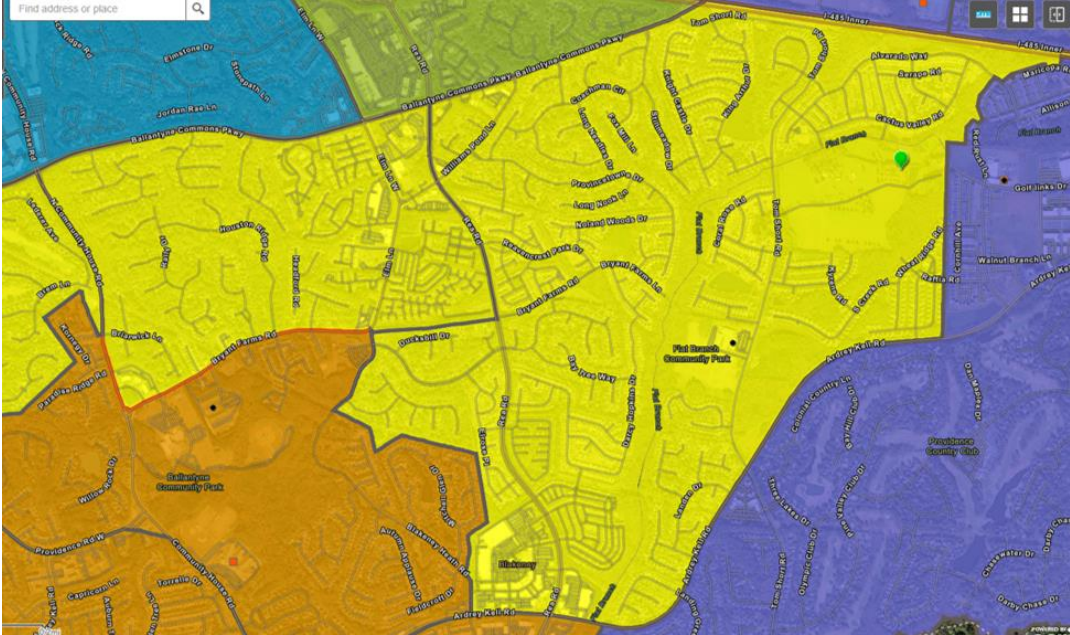


Reassigned from South Charlotte to Crestdale Middle School: The section of the current Elizabeth Lane Elementary attendance area east of Alexander Rd and east of Stratford Woods Rd (pink section):

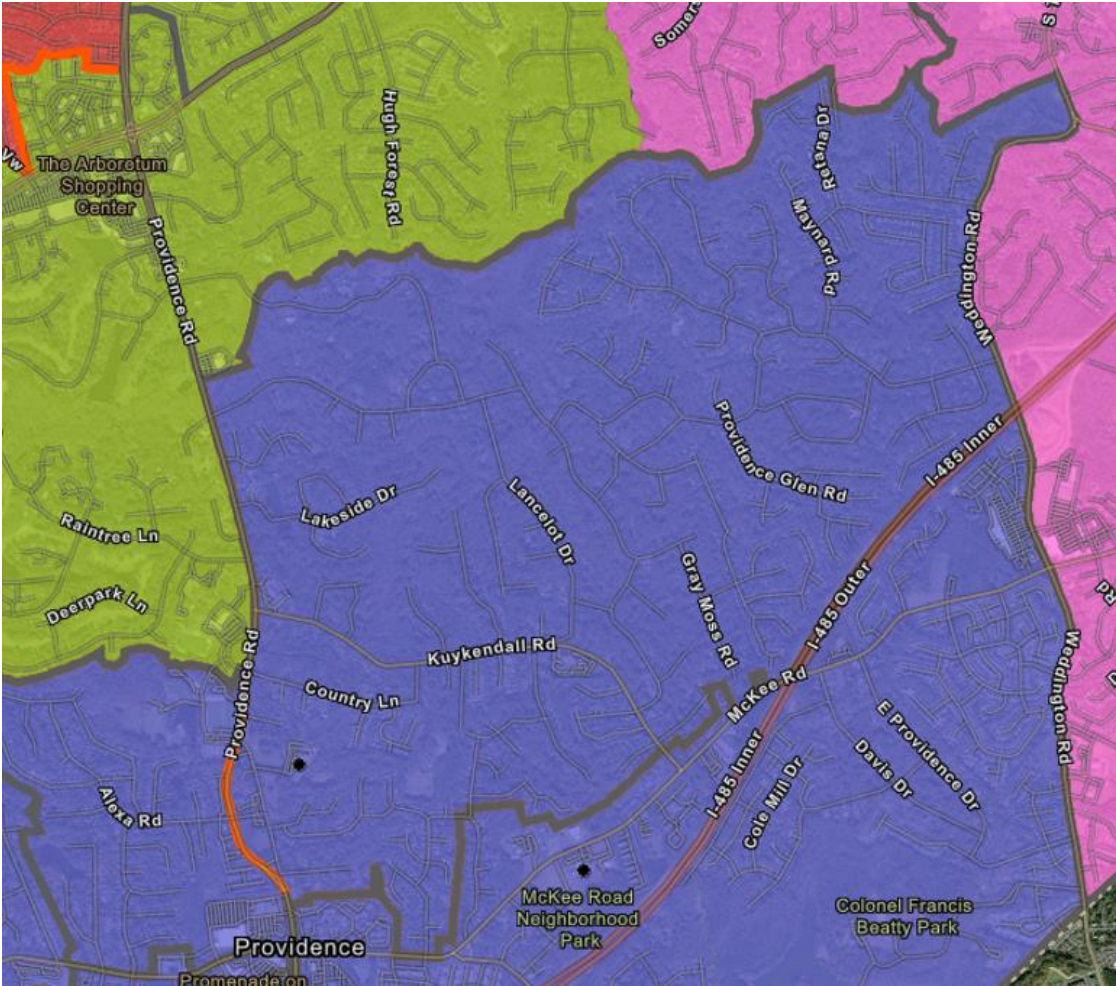


Reassigned from Jay M. Robinson to the New Relief Middle School:

- The section of the Hawk Ridge Elementary attendance area north of Bryant Farms Rd, and
- The current Polo Ridge attendance area (both in yellow section):



Reassigned from Crestdale Middle School to Jay M. Robinson: Providence Spring Elementary attendance area east of Providence Rd; the section of Providence Spring west of Providence Rd already attends Jay M Robinson (purple area):



**D. Rea Farms K-8 Boundary and Magnet Changes**

Recommendation: To relieve overutilization conditions, facilitate the opening of the New Relief Middle School, and provide additional choice options, Rea Farms K-8 will become a full STEAM magnet school consistent with the recommendations outlined below. The elementary (K-5) portion of the Rea Farms boundary reassignment will become effective in the 2024-2025 school year; the middle grades (6-8) boundary reassignment will go into effect concurrent with the opening of the New Relief Middle School.



## D.1 - Rea Farms K-8/Jay M Robinson Middle School Boundary and Magnet Change

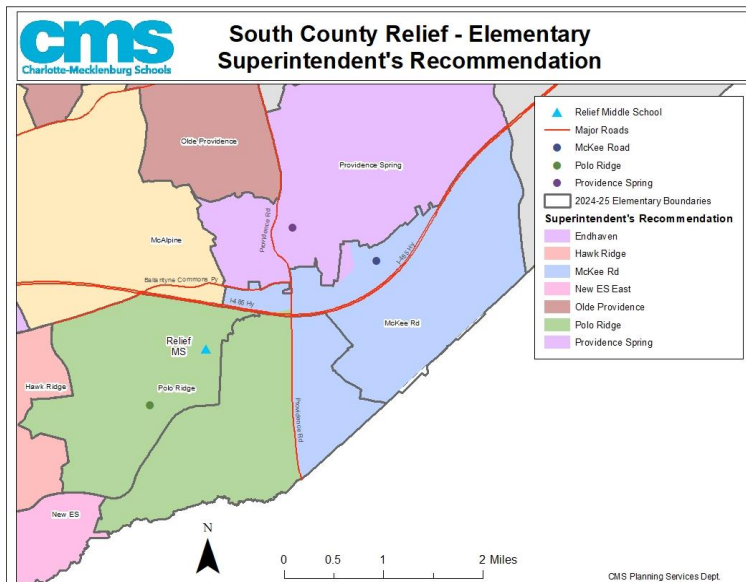
### Details:

- Non-magnet neighborhood Rea Farms 6-8 grade students will be reassigned to an adjacent middle school upon the opening of the New Relief Middle School, consistent with the below:
  - Non-magnet neighborhood 6-8 students will be reassigned to Jay M. Robinson Middle School.
  - Current Rea Farms 6-8 students will be guaranteed a magnet spot, with transportation. The sibling guarantee remains in place for students who choose to remain at Rea Farms.
  - Non-magnet, neighborhood elementary (K-5) students will have already been reassigned as per the below.

## D.2 - Rea Farms K-8/Polo Ridge Elementary/McKee Road Elementary Boundary and Magnet Changes

### Details:

- Non-magnet neighborhood K-5 students will be reassigned to an adjacent elementary school, but are guaranteed a magnet seat at Rea Farms K-8 if they wish to remain, as detailed below:
  - Students in the current Rea Farms attendance boundary residing east of Providence Rd will be reassigned to McKee Road Elementary School (see map below).
  - Students in the current Rea Farms attendance boundary residing west of Providence Rd will be reassigned to Polo Ridge Elementary School (see map below).
  - Current Rea Farms K-5 students will be guaranteed a magnet spot, with transportation. The sibling guarantee remains in place for students remaining at Rea Farms.

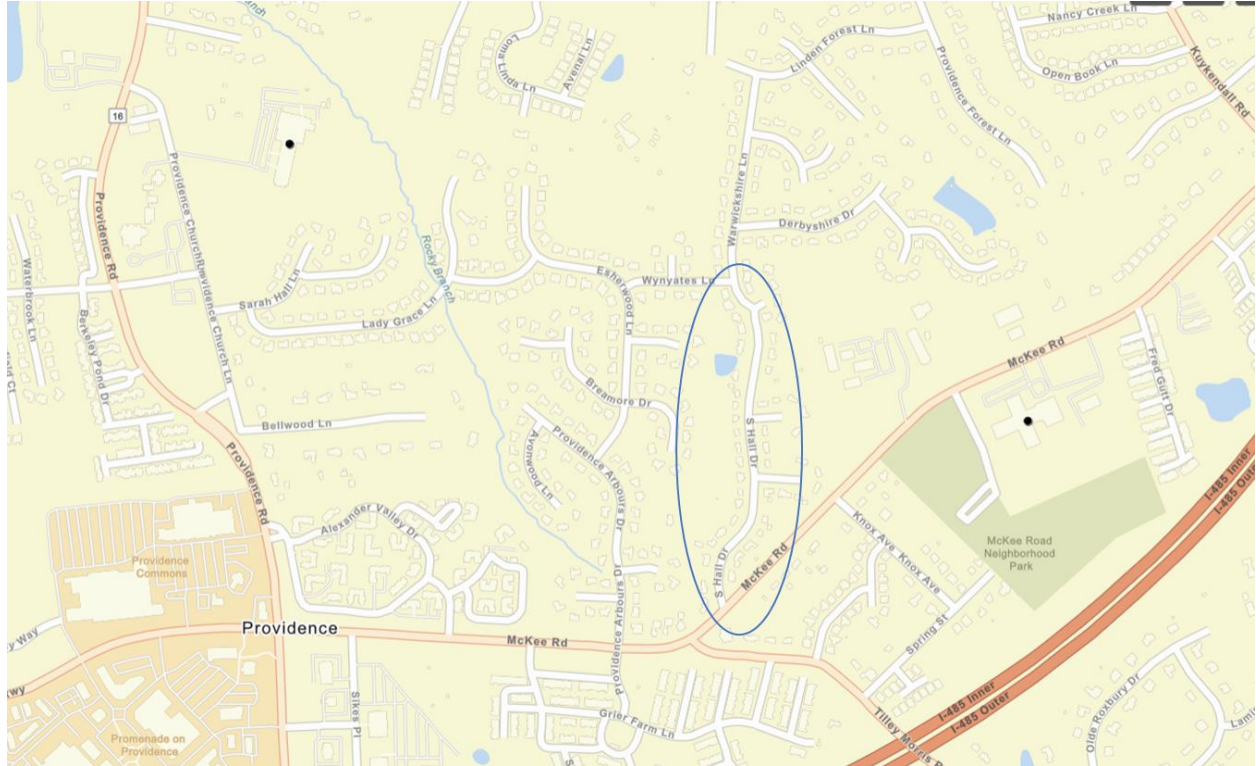




### D.3 - McKee Road/Providence Spring Elementary Boundary

Recommendation: Reassign South Hall Drive from McKee Rd Elementary to Providence Spring Elementary.

Details: This change will happen in conjunction with the boundary change as outlined in D.2.



## **E. South County International Baccalaureate (IB) Magnet Program Changes**

### **E.1 - High School IB Magnet Program Changes**

Recommendation: A new International Baccalaureate (IB) program will be authorized at the relief high school. There will not be any changes to the International Baccalaureate (IB) program at Myers Park. The language programs will remain at South Mecklenburg.

Details:

- New International Baccalaureate (IB) program at New Relief High School
  - This includes the MYP (Middle-years program) for grades 9 and 10, as well as the IBDP (Diploma Program) for grades 11 and 12; the IB career track is to be authorized subsequently.
  - Students who are assigned to Olympic, Palisades, Ardrey Kell, and South Mecklenburg High schools will be eligible to apply for an IB magnet seat at the New Relief High School, starting with MYP 9th and 10th grade in the year the New Relief High School opens; and DP and career enrollments once authorized.
  - Students assigned to Providence High School students will continue to participate in the IB programs at East Mecklenburg High School.
- No changes to the International Baccalaureate (IB) program at Myers Park High School
  - Consistent with A.3 above, an option to remain for certain students is provided.
  - No students from outside the Myers Park High School attendance boundary will be eligible to choice into any of the IB programs at Myers Park High School as a result of these recommendations.
- Partial World Languages magnet programs to remain at South Mecklenburg High School, with no changes to entry or continuation criteria as a result of these recommendations.

### **E.2 - Middle School IB Magnet Program Changes**

Recommendation: A new International Baccalaureate program (IB) will be authorized at Quail Hollow Middle School, to replace the existing Leadership magnet program, effective in the 2024-2025 school year. This timeline is intentionally disconnected from the opening of the New Relief Middle School. The K-12 pathway for IB in South County will become Huntingtowne Farms ES (partial) to Quail Hollow MS (partial) to New Relief HS (partial).

Details: Magnet students currently attending Quail Hollow Middle School will be allowed to remain at Quail Hollow in the IB program. Students wishing to opt-out of the IB program will be returned to their neighborhood school or have the option to register for a different magnet program.