



January 3, 2025

Mr. Dan Dodd
FitFields
314 Tom Hall Street
Fort Mill, South Carolina 29715

ECS Project No. 08:16063

Reference: Data Report of Limited Subsurface Exploration
Providence High School Athletic Track
Charlotte, Mecklenburg County, North Carolina

Dear Mr. Dodd:

ECS Southeast, LLC (ECS) is pleased to submit this data report of limited subsurface exploration for the above referenced site. Our services were performed in general accordance with our Proposal No. 08:30914P dated December 9, 2024. This data report presents the results of the field exploration.

PROJECT INFORMATION AND PROPOSED CONSTRUCTION

The site consists of the existing Providence High School athletic track located at 1800 Pineville-Matthews Road in Charlotte, Mecklenburg County, North Carolina. Based on our correspondence with the Client we understand that the existing track is going to be removed and replaced.

SUBSURFACE EXPLORATION PROCEDURES

Four (4) asphalt cores were performed at widely spaced locations within the existing track pavements. Photos of the cores obtained are attached. Additionally, the stone base course materials below the asphalt were removed by hand to approximate the thickness at each testing location. The core locations were located using handheld GPS technology and existing site features as reference and the approximate locations are shown on the Exploration Location Diagram attached.

Pavement thicknesses at each core location are provided in the table on the following page:

APPROXIMATE TRACK MATERIAL THICKNESSES				
Core No.	Rubber Surface Coat (inches)	Asphalt Thickness (inches)	Stone Base Thickness (inches)	Total Section Thickness (inches)
C-01	$\frac{3}{8}$	$2 \frac{1}{8}$	11	$13 \frac{1}{2}$
C-02	$\frac{3}{8}$	$2 \frac{1}{2}$	10	$12 \frac{7}{8}$
C-03	$\frac{3}{8}$	$3 \frac{3}{8}$	10	$13 \frac{3}{4}$
C-04	0	$2 \frac{1}{2}$	9	$11 \frac{1}{2}$

CLOSING

It has been our pleasure to be of service to you during this phase of this project. We performed these services in accordance with the standard of care expected of professionals in the industry performing similar services on projects of like size and complexity at this time in the region. No other representation is expressed or implied, and no warranty or guarantee is included or intended in this report. ECS is not responsible for the conclusions, opinions, or recommendations of others based on the data in this report. Should you have any questions concerning the information contained in this letter, or if we can be of further assistance to you, please contact us at (704) 525- 5152.

Respectfully submitted,

ECS Southeast, LLC



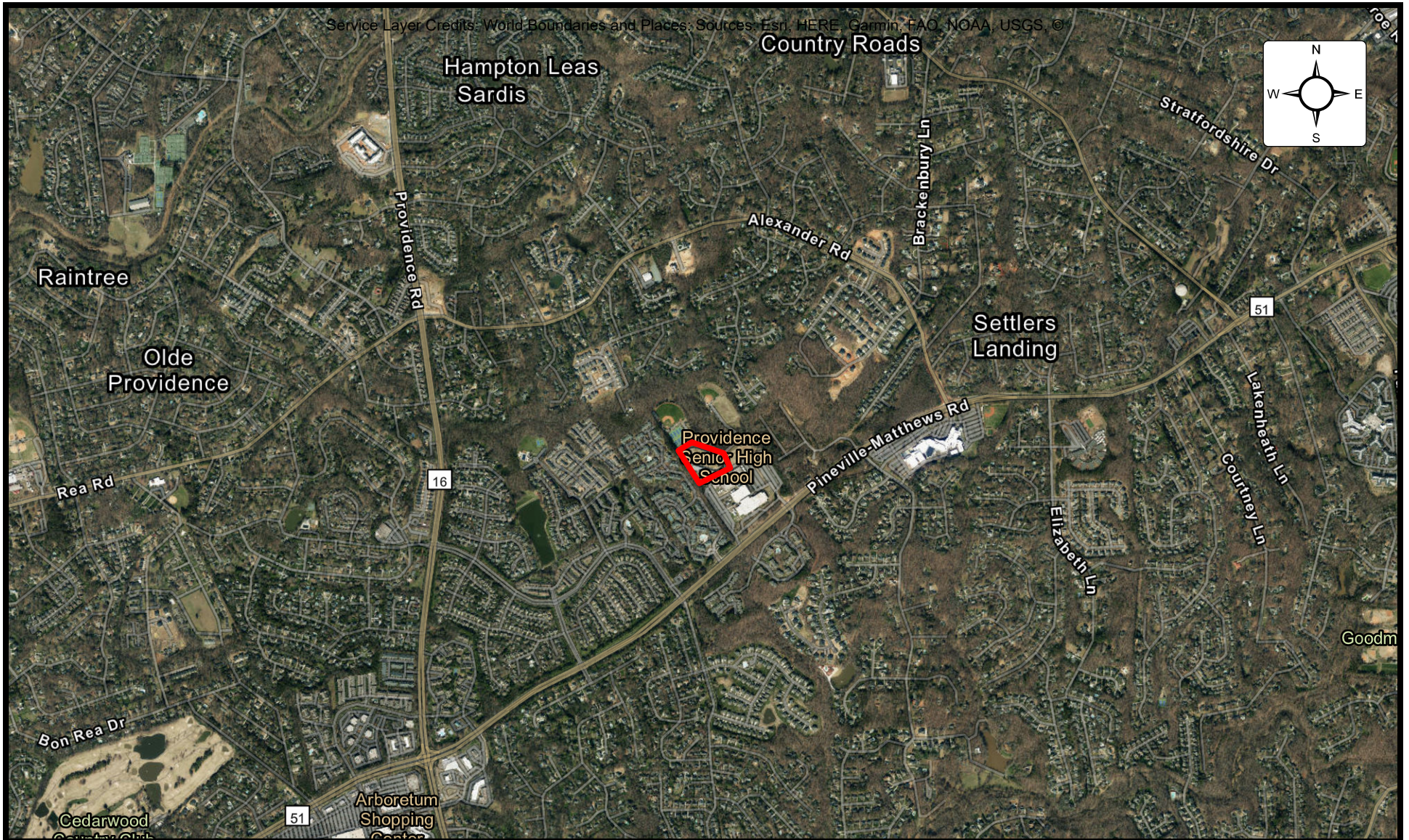
Sierra M. Vardaoulis, P.E.
Senior Project Engineer
SVardaoulis@ecslimited.com



Christopher J. Conway, P.E.
Principal Engineer
CConway@ecslimited.com

Attachments

- Site Location Diagram
- Exploration Location Diagram
- Pavement Core Photo Logs



SITE LOCATION DIAGRAM

Providence HS Athletic Track

Charlotte, Mecklenburg County, North Carolina
FitFields

ENGINEER CJC
SCALE 1" = 2000'
PROJECT NO. 08:16063
SHEET 2
DATE 1/3/2025



Legend



Approximate Core Location



EXPLORATION LOCATION DIAGRAM

Providence HS Athletic Track

Charlotte, Mecklenburg County, North Carolina
FitFields

ENGINEER
CJC

SCALE
1" = 100'

PROJECT NO.
08:16063

SHEET
2

DATE
1/3/2025



Pavement Core C - 01

Rubber Surface Coat: **3/8 inch**
 Asphalt Pavement Thickness: **2 1/8 inches**
 Stone Base Course Thickness: **11 inches**



Pavement Core C-02

Rubber Surface Coat: **3/8 inch**
 Asphalt Pavement Thickness: **2 1/2 inches**
 Stone Base Course Thickness: **10 inches**



Pavement Core C-03

Rubber Surface Coat: **3/8 inch**
 Asphalt Pavement Thickness: **3 3/8 inches**
 Stone Base Course Thickness: **10 inches**



Pavement Core C-04

Rubber Surface Coat **Not Present**
 Asphalt Pavement Thickness: **2 1/2 inches**
 Stone Base Course Thickness: **9 inches**

Pavement Cores Photo Logs
 January 3, 2024



Providence HS Athletic Track
 Charlotte, Mecklenburg County, North Carolina
 ECS Project No. 08:16063